

March 2023



**CAPITAL PROJECTS REPORT**  
to the

**Citizens' Oversight Committee**

**MAAS**

**Intentionally Left Blank**

# TABLE OF CONTENTS

## Active Project Status Report

### *Cypress Campus*

Campus Aerial View .....	2
Fine Arts Building Renovation.....	3
Swing Space—Fine Arts (Old SEM) .....	4
Electrical Vehicles (EV) SCE Charging Stations-Lot 4.....	5
LLRC Secondary Data Center (Phase II).....	6
Campus-Wide Security Systems Upgrade.....	7
Update/Improve Infrastructure.....	8
Mass Communications & Security Systems Upgrade .....	9
Updates on Campus Projects - Cypress College .....	10-13

### *Fullerton Campus*

Campus Aerial View .....	14
Renovate Buildings 300 .....	15
New Maintenance & Operation Building .....	16
Chapman / Newell Instructional Building .....	17
New Performing Arts Complex - Demolish Buildings 1100 and 1300.....	18
Wilshire Chiller Plant Relocation .....	19
Update / Improve Infrastructure .....	20
Updates on Campus Projects - Fullerton College .....	21-24

### *NOCE - Anaheim Campus*

Campus Aerial View .....	25
Swing Space Project / Interim Housing.....	26
Swing Space - Hotel, Restaurant, and Culinary Arts .....	27
Develop Interior And Exterior Signage .....	28
Anaheim Campus Tower First Floor Life/Safety Renovation .....	29
Outdoor Patio Remodel.....	30
Update / Improve Infrastructure.....	31
Updates on Campus Projects - Anaheim Campus .....	32-37

<i>Update on District-Wide Project</i> .....	38-39
----------------------------------------------	-------

## Completed Projects

Cypress Campus .....	41-44
Fullerton Campus.....	45-46
NOCE - Anaheim Campus & District Offices.....	47-48

## Financial Review

<i>Capital Project Updates - Measure J</i> .....	50
Estimated Project Budgets & Purchase Orders Over \$10,000 .....	51-58
Cypress Campus .....	51-52
Fullerton Campus .....	53-54
NOCE - Anaheim Campus .....	55-56
District .....	57-58
90-Day Look Ahead Schedule.....	59

# Active Project Status Report

## Campus Projects

- Cypress
- Fullerton
- Anaheim and District Offices



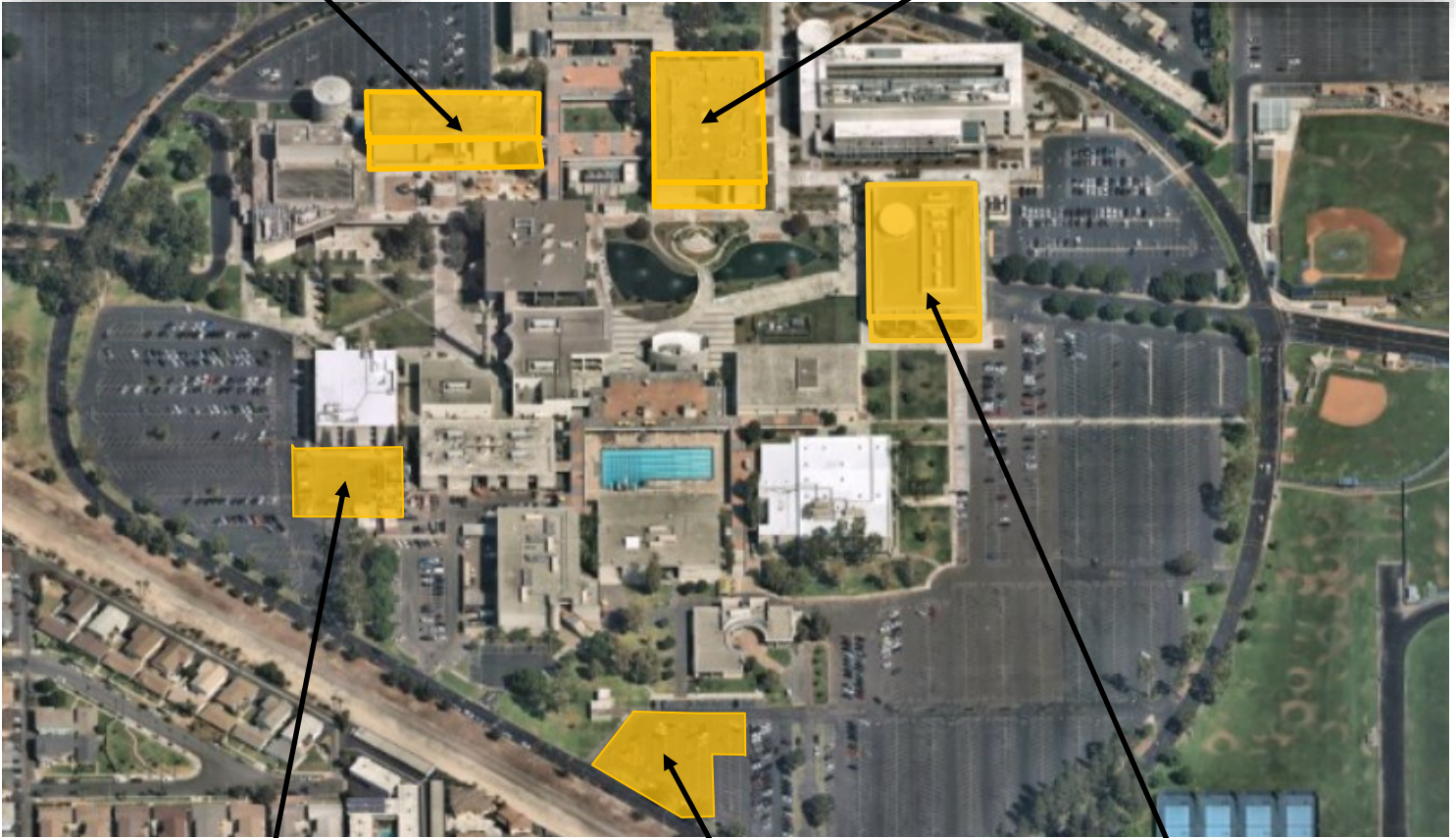
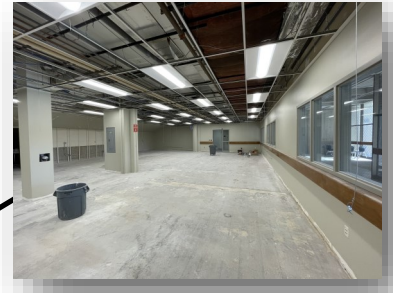


# AERIAL VIEW — CYPRESS CAMPUS PROJECTS



Fine Arts Building Renovation  
[Bidding]

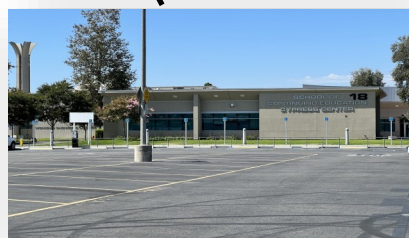
Swing Space - Fine Arts (Old SEM)  
[Construction]



Swing Space Project—Hotel, Restaurant,  
and Culinary Arts  
[DSA Review]

\*See page 27 and 36 for more details

- ▶ IT Network Refresh (Throughout Campus)  
[Implementation]
- ▶ Campus-Wide Security Systems Upgrade  
[Close-out]



Electrical Vehicles (EV) SCE Charging  
Stations-Lot 4  
[Design]



LLRC Secondary Data Center (Phase II)  
[ Implementation ]



# PROJECT STATUS REPORT – CYPRESS CAMPUS

## FINE ARTS BUILDING RENOVATION BIDDING

<b>Address</b>	<b>9200 Valley View St. Cypress, CA 90630</b>
<b>Project Manager</b>	<b>Allison Coburn Cypress College</b>
<b>Architect</b>	<b>DLR Group</b>
<b>Construction</b>	<b>Sundt Construction, Inc.</b>
<b>Project Square Footage</b>	<b>66,765 GSF</b>
<b>DSA Application A#</b>	<b>04-120539</b>



### Project Overview

The project involves the renovation of the existing 36,804 ASF in the Fine Arts Building #2. Currently, related instructional programs are dispersed throughout the Campus. Renovations will encompass functional and adequate recording arts, rehearsal and performance spaces for music instruction, spaces for student study near departmental faculty and other resources, and the reuse of existing vacant spaces currently not configured for instruction. Noise intrusion between spaces will be mitigated to minimize disruptions to instruction and music practice, and new instructional technology will be installed to support current instructional methodologies and pedagogies. The scope also replaces the existing mechanical, electrical, and plumbing systems and allocates sufficient square footages for code compliant bathrooms. Allocation of funds by the Department of Finance was obtained to address seismic upgrades to comply with DSA requirements.

- Preliminary Total Project Budget ..... \$53,256,861
- Funding Source ..... Measure J & State Capital Outlay
  - Measure J ..... \$33,413,861
  - State Capital Outlay Funds ..... \$19,843,000
- Estimated Construction Start..... July 2023
- Targeted Completion ..... Summer 2025



# PROJECT STATUS REPORT – CYPRESS CAMPUS

## SWING SPACE - FINE ARTS (OLD SEM) CONSTRUCTION

<b>Address</b>	9200 Valley View St. Cypress, CA 90630
<b>Project Manager</b>	Allison Coburn Cypress College
<b>Architect</b>	DLR Group
<b>Project Delivery Method</b>	Design-Bid-Build
<b>General Contractor</b>	New Dynasty Construction Co.
<b>DSA Application A#</b>	04-120540



### Project Overview

The existing 1972, 3-story, 100,681 square foot of the former Science Engineering and Mathematics (old SEM) building will be utilized to temporarily house the Fine Arts programs while the Fine Arts Building undergoes renovation. To accommodate the fine arts programs, minor renovations will be required including, but not limited to, demolition of casework, sinks, plumbing, flooring, and accessibility restroom upgrades. Only a portion of the gross square footage (GSF) is undergoing renovation.

### Budget & Construction Costs

- Project Budget.....\$5,626,285
- Funding Source.....Measure J
- Project Square Footage.....100,681 GSF

### Schedule

- Design Start..... May 2021
- Construction Start..... July 2022
- Contracted Substantial Completion ... January 2023
- Targeted Substantial Completion ..... March 2023
- Closeout ..... June 2023

Allowances Status						
	In Contract	Approved		Balance		
Allowance	\$ 195,000	\$ 181,557	93%	\$ 13,443	7%	





# PROJECT STATUS REPORT – CYPRESS CAMPUS

## ELECTRICAL VEHICLES (EV) SCE CHARGING STATIONS-LOT 4

### Design

<b>Address</b>	<b>9200 Valley View St. Cypress, CA 90630</b>
<b>Project Manager</b>	<b>Phil Fleming Cypress College</b>
<b>Architect</b>	<b>Southern California Edison</b>
<b>Project Delivery Method</b>	<b>Turn-key</b>



### Project Overview

In coordination with Southern California Edison (SCE) 60 electric vehicle charging stations will be installed at parking lot 4, in the vicinity of the North Orange Continuing Education (NOCE) Building.

- Project Budget ..... \$492,000
- Funding Source ..... Measure J
- Architect/Engineer of Record ..... SCE & Brytemove Energy
- Estimated Construction Start ..... May 2023
- Targeted Completion ..... October 2023





# PROJECT STATUS REPORT – CYPRESS CAMPUS

## LLRC SECONDARY DATA CENTER (PHASE II) IMPLEMENTATION

<b>Address</b>	<b>9200 Valley View St. Cypress, CA 90630</b>
<b>Project Manager</b>	<b>Allison Coburn Cypress College</b>
<b>Equipment Provider</b>	<b>Sidepath Inc.</b>
<b>Project Delivery Method</b>	<b>Professional Services Contracting</b>



### Project Overview

The project includes purchasing and deploying virtualization hardware for the secondary Main Distribution Frame (MDF) data center installed in Phase I to ensure it is fully capable of providing network redundancy for the campus.

- Project Budget ..... \$500,000
- Funding Source ..... Measure J
- Project Square Footage..... N/A
- Construction Start..... November 2022
- Targeted Construction Completion ..... March 2023



# PROJECT STATUS REPORT – CYPRESS CAMPUS

## CAMPUS-WIDE SECURITY SYSTEMS UPGRADE CLOSE-OUT

<b>Address</b>	<b>9200 Valley View St. Cypress, CA 90630</b>
<b>Project Manager</b>	<b>Allison Coburn Cypress College</b>
<b>Project Delivery Method</b>	<b>Professional Services Contracting</b>



### Project Overview

Assessment of the Campus security system and development of security system standards. Considerations for design solutions are underway. Construction and implementation are initially estimated at \$1.7M.

- Project Budget ..... \$1,816,170
  - Phase 1 ..... \$371,367
  - Remaining Phases ..... \$1,444,803
- Funding Source ..... Measure J
- Architect/Engineer of Record ..... Guidepost Solutions, LLC.
- Estimated Construction Start ..... June 2021
- Targeted Completion ..... December 2023



# PROJECT STATUS REPORT — CYPRESS CAMPUS

## UPDATE/IMPROVE INFRASTRUCTURE

### VARIOUS STAGES

<b>Address</b>	<b>9200 Valley View St. Cypress, CA 90630</b>	<b>Total Project Budget</b>	<b>\$24,653,641 (Measure J)</b>
		<b>Total Budget Allocated</b>	<b>\$16,171,042 (Measure J)</b>
<b>Number of Projects</b>	<b>8</b>	<b>Funding Source</b>	<b>Measure J &amp; Capital Outlay</b>

### General Overview

Projects to address infrastructure improvements or upgrades throughout the Campus. Funds are allocated to projects as needs are identified.

### IT Network Refresh Project Overview

#### IMPLEMENTATION

Assessment of Campus data network infrastructure to identify necessary upgrades and changes that will enable supporting future Campus needs; specifically addressing wired, wireless, voice, and video networks. The scope includes replacing network core switches, providing a more responsive support structure, preparing for cloud computing, and adaptation of Voice over Internet Protocol (VoIP) systems across the District.

- Project Budget ..... \$8,911,031
  - Current Implementation (Measure J) ..... \$1,972,462
  - Current Implementation (Capital Outlay)..... \$3,809,444
  - Upcoming Phases (Measure J) ..... \$3,129,125
- Funding Source ..... Measure J & Capital Outlay Funds
- Project Delivery Method..... California Multiple Award Schedule (CMAS)
- Design Implementation..... VectorUSA
- Architect..... Shandam Consulting
- Project Management ..... District IS / PlanNet Consulting
- Design Implementation Start..... November 2019
- Targeted Completion ..... June 2023



# PROJECT STATUS REPORT — CYPRESS CAMPUS

## MASS COMMUNICATION & SECURITY SYSTEMS UPGRADE

### VARIOUS STAGES

<b>Address</b>	<b>9200 Valley View St. Cypress, CA 90630</b>	<b>Total Project Budget</b>	<b>\$2,589,603</b>
		<b>Total Budget Allocated</b>	<b>\$646,748</b>
<b>Number of Projects</b>	<b>4</b>	<b>Funding Source</b>	<b>Measure J</b>

### General Overview

Projects to address fire alarm, mass communication, security, access control, and lockdown systems throughout the Campus. Funds are allocated to projects as needs are identified. Two projects have been completed to date related to door replacements and safety film installation.





# PROJECT STATUS REPORT — CYPRESS CAMPUS

## UPDATES ON CAMPUS PROJECTS - CYPRESS COLLEGE

### Fine Arts Building Renovation

#### December/January

- In the previous quarter, construction manager Sundt Construction assisted in developing a Building Information Model (BIM) prototype for the location of the depth of existing utilities and potential conflict with the upcoming building foundation scope of work. The results of this exercise have informed the need for relocation of the existing utilities at or near impacted zones.
- The Construction Documents (CDs) previously approved by DSA underwent review at the California Community Colleges Chancellor's Office (CCCCO). Bidding will proceed for the general contractor after approval from the State agency.

#### February

- The District met with personnel from the California Community Colleges Chancellor's Office (CCCCO) and the Department of Finance (DOF) to discuss expediting approval for bidding for the Fine Arts Building Renovation on behalf of Cypress College as part of ongoing coordination efforts between the District and State for the funding and phase approvals of all involved projects. Upon CCCCCO approval, the Campus will be cleared to bid the project with the aim to start construction in 2023.



Fine Arts Renovation—Foyer by DLR Group

- Outstanding comments from the Campus Project Team must be addressed by DLR prior to release of Construction Documents for bidding. The Campus Project Team is coordinating meetings in the upcoming weeks with the project's Construction Manager and the Architectural team to incorporate these comments into the final set of drawings.

### Swing Space - Fine Arts (Old SEM)

#### December/January

- Sundt and New Dynasty worked on the proposed change order as the current schedule for project completion exceeds the contractual dates

and scopes of work identified during construction, thus depleting the allowance funds available. The Campus will present an agenda item to the Board of Trustees at the meeting on February 14. Extensions for professional services associated with the project will be part of separate amendments and purchase order adjustments.



# PROJECT STATUS REPORT — CYPRESS CAMPUS

## UPDATES ON CAMPUS PROJECTS - CYPRESS COLLEGE (Continued)

- The contractor team has concluded all demolition and installation of the mechanical, electrical, and plumbing (MEP) scope of work. The team worked on open requests for information (RFIs) to DLR for data connections, fire alarm installation, and ceiling grid installation among others.
- The team has identified additional needs for specialty services to complete the kiln connection and installation and data connectivity in the renovated spaces. The completion of these above items will be addressed in anticipation of the August move date for faculty and staff from the Fine Arts Building in preparation for the fall semester this year.



Swing Space—Fine Arts—Construction Activities

### February

- The Campus Project Team finalized the Change Order and presented it to the Board of Trustees on February 14 and they received approval to extend project completion to March 10 and increase the construction cost by \$92,863 due to unforeseen conditions.
- Substantial completion is projected for February 28 while final completion of this project is anticipated by the end of March following the successful conclusion of punch-list items. Framing, drywall, and tiling installation have been completed in all bathrooms. Partitions are now in place in the first-floor bathrooms. The carpet and flooring work are nearing completion in all renovated rooms. The dropped ceiling t-bar and tile installation are also nearing completion. Cabinetry and door hardware installation are underway throughout the building. Flooring work in the second and first floors are anticipated to be installed this month. Primer and painting are in progress on the second floor. All other remaining activities are being sequenced for expedited completion. General clean up in the completed spaces began on February 6 in preparation of the punch-list walk. Move-in activities into the building will commence following project completion in March.
- The design team has two Construction Change Directives (CCDs) pending approval at DSA. The achievement of the above completion dates is predicated on the successful acceptance and installation of components associated with these changes.



# PROJECT STATUS REPORT — CYPRESS CAMPUS

## UPDATES ON CAMPUS PROJECTS - CYPRESS COLLEGE (Continued)

- During the recent winter storms impacting the project location, Sundt and New Dynasty identified water intrusion issues in the roof and concrete walls of the building. The construction manager is reviewing the necessary scope of work to address wall leaks in cast-in-place concrete and mitigate water issues in newly renovated spaces.

### **EV SCE Charging Stations – Lot 4**

#### **December/January**

- Southern California Edison's (SCE) Design Team delivered the preliminary design to the Campus Project Team in early January for their consideration. The team anticipated a submission of the CDs to DSA for their review and approval in late January.
- In the upcoming months, the team will draft a Board Agenda Item addressing adjacent easement rights to SCE related to this project.

#### **February**

- Southern California Edison (SCE) has provided the Campus with the completed design drawings. The team reviewed and returned comments to SCE. Both parties performed a site walk to resolve any lingering questions and concerns. Findings from the walk will be incorporated into the drawings for plan check submittal to DSA in mid-March.

### **LLRC Secondary Data Center (Phase II)**

#### **December/January**

- Equipment orders were processed. The project neared the end of Phase II as a final component was required for procurement and installation to enable operability.
- The team assessed methods to acquire a fiber feed to ensure the data center's operability as a redundancy. The team plans to consider opportunities in the future to establish a connection to the internet service provider (ISP) in a location that will be beneficial for this project as well as future Campus developments.

#### **February**

- There are no updates for this reporting period.



## UPDATES ON CAMPUS PROJECTS - CYPRESS COLLEGE (Continued)

### Campus-Wide Security Systems Upgrade (Phase I)

#### December/January

- Additional cabling was required for the completion of the installation of the new server. Installation of this server to the building distribution frame (BDF) will enable functionality for individual devices on the same network. Training will proceed after its completion.

#### February

- There are no updates for this reporting period.

### Update / Improve Infrastructure

#### IT Network Refresh Project

- Refer to Page 38-39 of this report for the overall project and Campus-specific updates.





# AERIAL VIEW — FULLERTON CAMPUS PROJECTS

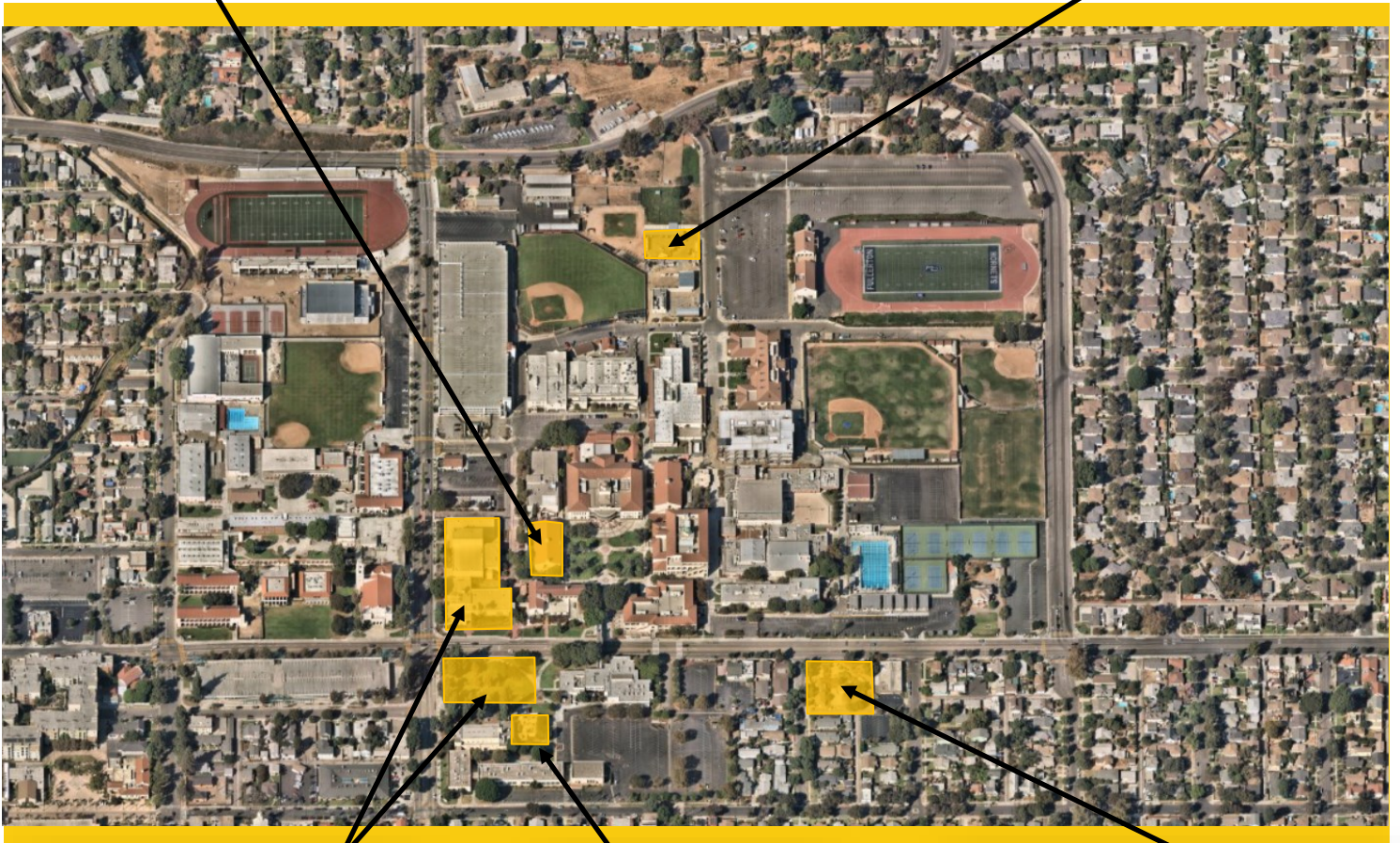


Renovate Building 300  
[DSA Review]

- ▶ IT Network Refresh  
(Throughout Campus)  
[Implementation]



New Maintenance & Operations Building  
[DSA Review]



New Performing Arts Complex - Demolish  
Buildings 1100 and 1300  
[DSA Review]



Wilshire Chiller Plant Relocation  
[DSA Review]



Chapman / Newell Instructional Building  
[DSA Review]

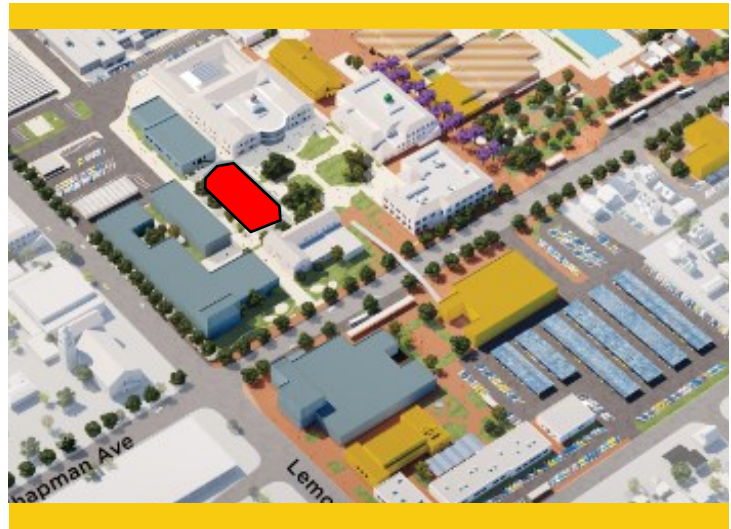


# PROJECT STATUS REPORT – FULLERTON CAMPUS

## RENOVATE BUILDING 300

### DSA REVIEW

<b>Address</b>	<b>321 E. Chapman Ave. Fullerton, CA 92832</b>
<b>Project Manager</b>	<b>Oscar Saghieh Fullerton College</b>
<b>Architect</b>	<b>Westberg White</b>
<b>General Contractor</b>	<b>TBD</b>
<b>Project Delivery Method</b>	<b>Design-Bid-Build</b>
<b>DSA Application A#</b>	<b>04-118314, 04-118314</b>



### Project Overview

Total renovation of Building 300, including seismic enhancements and historic consideration of Building 300. The renovated building will contain general classrooms, dean and faculty offices, and shared laboratories.

- Total Project Budget .....\$38,447,491
- Funding Source .....Measure J & State Capital Outlay
  - Measure J .....\$22,982,000
  - State Capital Outlay Funds .....\$15,465,491
- Project Gross Square Footage.....22,705 GSF
- Estimated Construction Start.....November 2023
- Targeted Completion .....Summer 2025





# PROJECT STATUS REPORT — FULLERTON CAMPUS

## NEW MAINTENANCE & OPERATION BUILDING

### DSA REVIEW

<b>Address</b>	321 E. Chapman Ave. Fullerton, CA 92832
<b>Project Manager</b>	Oscar Saghieh Fullerton College
<b>Design-Builder</b>	BN Builders, Inc. & Roesling Nakamura Terada Architects, Inc.
<b>Project Delivery Method</b>	Progressive Design- Build
<b>Project Gross Square Footage</b>	14,723 GSF
<b>DSA Application A#</b>	04-121528



### Project Overview

The New Maintenance and Operations (M&O) Building will centralize all services into a single building located on the Main Campus. The building will include trade-specific workshops for maintenance, grounds, facilities, and custodial personnel while improving response time and efficiencies by locating the building on the Main Campus adjacent to the central plant.

- Total Project Budget .....\$17,880,079
- Funding Source .....Measure J & Local Funds
  - Measure J .....\$6,758,944
  - Local Funds.....\$11,121,135
- Estimated Construction Start.....September 2023
- Targeted Completion .....Winter 2024



# PROJECT STATUS REPORT — FULLERTON CAMPUS

## CHAPMAN / NEWELL INSTRUCTIONAL BUILDING

### DSA REVIEW

<b>Address</b>	<b>321 E. Chapman Ave. Fullerton, CA 92832</b>
<b>Project Manager</b>	<b>Oscar Saghie Fullerton College</b>
<b>Design-Builder</b>	<b>BN Builders, Inc. &amp; Roesling Nakamura Terada Architects, Inc.</b>
<b>Project Delivery Method</b>	<b>Progressive Design-Build</b>
<b>Project Gross Square Footage</b>	<b>23,192 GSF</b>
<b>DSA Application A#</b>	<b>04-121527</b>



### Project Overview

The building at the intersections of Chapman Avenue and Newell Street will house the Campus Veterans' Resource Center, Student Wellness Center (both medical and behavioral health), the Campus Food Bank, Umoja Community Program, Extended Opportunity Programs and Services (EOPS), CalWORKS, Cooperative Agencies Resources for Education (CARE)/Foster Youth Success Initiative (FYSI), a Multi-Cultural Center, and 2 instructional classrooms. In addition, there will be support functions including shared community storage, a department-wide copy and breakroom as well as a lactation room.

- Total Project Budget .....\$28,703,107
- Funding Source .....Measure J & Local Funds
  - Measure J .....\$27,035,987
  - Local .....\$1,667,120
- Estimated Construction Start.....September 2023
- Targeted Completion .....Winter 2024





# PROJECT STATUS REPORT – FULLERTON CAMPUS

## NEW PERFORMING ARTS COMPLEX - DEMOLISH BUILDINGS 1100

### AND 1300

#### DSA REVIEW

<b>Address</b>	<b>321 E. Chapman Ave. Fullerton, CA 92832</b>
<b>Project Manager</b>	<b>Oscar Saghieh Fullerton College</b>
<b>Architect</b>	<b>Pfeiffer Partners Architects, Inc.</b>
<b>Project Delivery Method</b>	<b>Design-Bid-Build</b>
<b>DSA Application A#</b>	<b>04-121681</b>



### Project Overview

This project addresses the demand for enrollments in the performing arts programs by constructing a new complex bringing music, drama, theater arts, and communication programs together into a single facility. The new building replaces outdated facilities with electrical deficiencies and outmoded configurations. The new structure will take advantage of the potential use of commonly required spaces to improve overall utilization and flexible spaces that help programs in meeting higher demands anticipated in the near future. As this project is integral to the Campus master plan and changes in scope can jeopardize the availability of matching State funds for the project, assessments are underway for the increase of Measure J funding. Transfers of funds will be completed from lower-priority projects at the Campus. Refer to Updates on Campus Project pages ahead for more details.

- Preliminary Total Project Budget ..... \$120,078,034
- Expected Total Project Budget Increase to ..... \$129,000,000
- Funding Source..... Measure J & State Capital Outlay
  - Measure J ..... \$78,884,034
  - State Capital Outlay Funds ..... \$41,009,000
  - Local Funds..... \$185,000
- Project Gross Square Footage ..... 66,765 GSF
- Estimated Construction Start ..... November 2023
- Targeted Completion..... Winter 2026



# PROJECT STATUS REPORT — FULLERTON CAMPUS

## WILSHIRE CHILLER PLANT RELOCATION

### DSA REVIEW

<b>Address</b>	<b>321 E. Chapman Ave. Fullerton, CA 92832</b>
<b>Project Manager</b>	<b>Oscar Saghie Fullerton College</b>
<b>Architect of Record</b>	<b>Pfeiffer Partners Architects, Inc.</b>
<b>General Contractor</b>	<b>TBD</b>
<b>Project Delivery Method</b>	<b>Design-Bid-Build</b>
<b>Project Gross Square Footage</b>	<b>TBD</b>
<b>DSA Application A#</b>	<b>04-121682</b>



### Project Overview

Due to its location in the footprint of the future Performing Arts Complex, the demolition and relocation of the existing Chiller Plant and service yard are necessary as a first phase of the project. The current facilities deliver temperature control to the buildings in the vicinity, such as the Wilshire Center. The new facility will provide the same service to the current buildings in addition to the new Performing Arts Complex. The relocation of the infrastructure will be carried in coordination with the local utility, Southern California Edison (SCE).

- Total Project Budget (Est.) .....\$5,420,631
- Funding Source .....Measure J
- Estimated Construction Start.....November 2023
- Targeted Completion .....Spring 2024



# PROJECT STATUS REPORT — FULLERTON CAMPUS

## UPDATE/IMPROVE INFRASTRUCTURE

### VARIOUS STAGES

<b>Address</b>	<b>321 E. Chapman Ave. Fullerton, CA 92832</b>	<b>Total Project Budget</b>	<b>\$26,186,423 (Measure J)</b>
		<b>Total Budget Allocated</b>	<b>\$8,444,702 (Measure J)</b>
<b>Number of Projects</b>	<b>3</b>	<b>Funding Source</b>	<b>Measure J &amp; Capital Outlay</b>

### General Overview

Projects to address infrastructure improvements or upgrades throughout the Campus. Funds are allocated to projects as needs are identified.

### IT Network Refresh Project Overview

#### IMPLEMENTATION

Assessment of Campus data network infrastructure to identify necessary upgrades, and changes that will enable supporting future Campus needs; specifically addressing wired, wireless, voice, and video networks. The scope includes replacing network core switches, providing a more responsive support structure, preparing for cloud computing, and adaptation of Voice over Internet Protocol (VoIP) systems across the District.

- Project Budget ..... \$11,866,217
  - Current Implementation (Measure J) ..... \$3,132,039
  - Current Implementation (Capital Outlay)..... \$4,145,199
  - Upcoming Phases (Measure J) ..... \$4,588,979
- Funding Source ..... Measure J & Capital Outlay Funds
- Project Delivery Method..... California Multiple Award Schedule (CMAS)
- Design Implementation..... VectorUSA
- Architect..... Shandam Consulting
- Project Management ..... District IS / PlanNet Consulting
- Design Implementation Start..... November 2019
- Targeted Completion ..... June 2023

# PROJECT STATUS REPORT — FULLERTON CAMPUS

## UPDATES ON CAMPUS PROJECTS - FULLERTON COLLEGE

### Renovate Building 300

#### December/January

- Westberg White Architects (WWA) completed all drawings and specifications inclusive of seismic upgrade due to California Community Colleges Chancellor's Office (CCCCO) for the Preliminary Plans (PPs) document submittal. The Architect of Record (AOR) provided all documents on December 14 for subsequent delivery to the State agency for review and approval. In return, comments were received clarifying the project schedule and expected cost estimates for construction. The Design Team confirmed that there are no impacts to programming of building uses. The Design Team prepared for a quick turn-around of the project's Working Drawings (WDs) to achieve a DSA submittal by January 24.
- The Design Team's structural engineer and the project's geotechnical engineer consulted with DSA for the agency's direction on the preferred approach for strengthening the building's foundation without negatively altering the interior distribution of spaces. On January 9, WWA met with the structural and geotechnical engineers as well as the third-party reviewer over the micropile feasibility study. Micropiles serve as small foundation elements that provide structural support by underpinning the foundation and enhancing building stability, especially during a seismic event. According to WWA, DSA found that the use of micropiles satisfies code requirements by meeting the load requirements to protect damage from movement during a seismic event. The use of micropiles will minimize additional construction equipment needs and building slab demolition.
- The Submission of the final Construction Documents (CDs) and the geotechnical report to California Geological Survey (CGS) happened on January 23. The Campus Project Team will be notified whether CGS agrees with DSA's opinion on the use of micropiles after DSA submission as the study is under review by both State agencies. CGS is anticipated to provide findings to the team in early March. If CGS requests an amendment or change, then the previous DSA submission will be impacted.

#### February

- Comments received from CCCCCO are under review by WWA. DSA continues the review of the drawings and approval is anticipated in May of this year. Bidding will follow. A Notice



New M&O Building Rendering

# PROJECT STATUS REPORT — FULLERTON CAMPUS

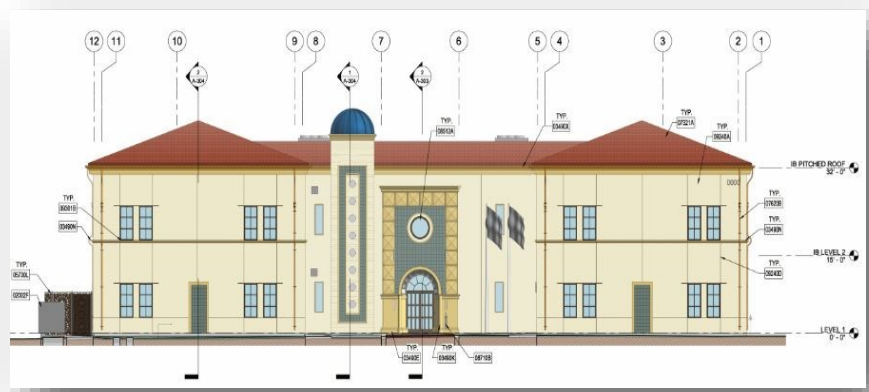
## UPDATES ON CAMPUS PROJECTS - FULLERTON COLLEGE (Continued)

to Proceed (NTP) signaling the start of construction is anticipated to be issued in early November. Construction will last approximately 20 months and completion is projected for June 2025.

### Chapman / Newell Instructional Building and New Maintenance & Operations Building

#### December/January

- The submitted CDs were under review at DSA following submittal of the plan check in October. The initial Guaranteed Maximum Price (IGMP) cost estimate was received on December 20. The Design-Build team submitted a revised estimate of probable cost to the Campus Project Team in early January. Cost reconciliation was underway in concurrence with DSA plan check review. Final GMP is planned for presentation to the Board upon completion in the summer.



New Chapman / Newell Instructional North Exterior Rendering

- Right-of-way improvements were submitted to the City of Fullerton and the team awaited their response in early January.
- On January 11, O'Connor provided their cost estimate for each project's fair value utilizing the same format as BNB to facilitate a comparison between them. As part of the next phase of reconciliation, the team has requested a detailed summary of the bidding information from BNB so that O'Connor may analyze it for potential discrepancies and duplicate costs.

#### February

- A second round of cost reconciliation has occurred for both projects on February 13 that successfully brought the respective estimates closer into alignment, and thus significantly reducing the discrepancies in the two cost estimates.
- The Campus Project Team is working on strategies for successful procurement of materials and components with long lead times of up to approximately 80 weeks. They include switch gears, and mechanical, and electrical equipment. Among the strategies is the potential release of the first increment of the GMP in late March containing the vast majority of costs associated with this project with the exception of improvements by





# PROJECT STATUS REPORT — FULLERTON CAMPUS

## UPDATES ON CAMPUS PROJECTS - FULLERTON COLLEGE (Continued)

the City of Fullerton and back-check comments from DSA. Any additional cost related to these two items will be addressed in a second and final increment of a GMP for approval in summer 2023.

- The City of Fullerton Public Works Agency submitted comments for the right-of-way improvements associated with this project by mid-January. In February, the Campus Project Team had a successful meeting with the public agency. The Design Team has submitted questions for the civil engineering scope of work; the City's responses were received on February 16. The Design Team is also working on the estimated cost to ensure project completion.
- DSA approval is projected for July 2023. The Guaranteed Maximum Price (GMP) will be finalized in August 2023. The NTP is anticipated to be issued in September, and its duration is scheduled to last for 16 months with construction completion in December 2024.

### **New Performing Arts Complex**

#### **December/January**

- The Campus Project Team previously received the results of the historical architect review in September illustrating that the project's mass, scale, and style were not in congruence with the historical context of the surrounding buildings. Due to the guidelines associated with the project's State Funding, the team was unable to comply with the opinion of the review. The team subsequently hired Dudek to complete a third-party review of the original findings and the team requested an assessment from a member of the project's legal counsel, Gatzke, Dillon, & Ballance LLP. Pfeiffer worked with Dudek to incorporate Dudek's findings into an addendum to explain why the standards of the historical architect review cannot be met. These findings were combined into the existing addendum that was later presented to and approved by the Board of Trustees on January 24.
- The team submitted a Board Agenda Item in the area of budget concurrence to present anticipated increases in the budget due to the rising cost of materials and services. Approval of this agenda item will later allow the Campus Project Team to transfer funding from additional sources to supplement the existing budget up to an estimated \$129M.

#### **February**

- The DSA submission previously made in early December of last year remains under review at the State. Back-check comments are not expected to be received until July 2023. Approval is now anticipated in Q3 followed by the bidding process. The NTP that signals the start of construction is now anticipated to be issued by late December 2023 or early January 2024 with its anticipated conclusion in December 2025.
- The Campus Project team is in the preliminary stages of evaluating options to conduct the prequalification of general contractors for this project.



# PROJECT STATUS REPORT — FULLERTON CAMPUS

## UPDATES ON CAMPUS PROJECTS - FULLERTON COLLEGE (Continued)

- The Building User Group (BUG), AOR and the Campus Project Team met on February 3 to review comments on the 100% CDs drawing specifications paying special attention to user requirements. Any potential changes to the drawings will be incorporated into the DSA submittal during the back-check process.

### Wilshire Chiller Plant Relocation

#### December/January

- Pfeiffer Partners and Architects submitted the project's CDs to DSA for plan check in the first week of December. The State agency provided a series of preliminary submittal comments for the AOR to address and fulfill the requirements for a completed initial submittal. Pfeiffer will address the list of remarks and provide an initial re-submittal in the upcoming weeks.



New Performing Arts Complex West Elevation Rendering

#### February

- Pfeiffer addressed all remaining comments provided by DSA from December 2022. Package resubmission of the first increment occurred on February 8 for the future Chiller Yard. The architect is working with the Campus Project Team to obtain all remaining details about the equipment to be relocated as part of the adjacent arts yard. Most issues will be addressed as part of a second increment submittal to the State agency in summer 2023 under the same application number.
- The first increment was reviewed by DSA and in a meeting on February 16 with the Design Team, the State agency notified the remaining incompleteness of the submission package. The Design Team is thoroughly reviewing DSA comments and aiming for a second resubmittal on March 6. In a tentative schedule, DSA's review is anticipated to last six months and approval is projected for August 2023. The bidding process will begin after the approval. The NTP for construction start is anticipated in October 2023 and construction will conclude approximately six months later. These dates are predicated on the expeditious approval of the CDs by DSA.

### Update / Improve Infrastructure

#### IT Network Refresh Project

- Refer to Page 38-39 of this report for the overall project and Campus-specific updates.



# AERIAL VIEW — ANAHEIM CAMPUS PROJECTS



Anaheim Campus Tower  
First Floor Life/Safety Renovation  
[DSA Review]

Outdoor Patio Remodel  
[Design]

Swing Space Projects / Interim Housing  
[Bidding]

- ▶ Develop Interior and Exterior Signage  
[Procurement]
- ▶ IT Network Refresh (Throughout Campus)  
[Implementation]



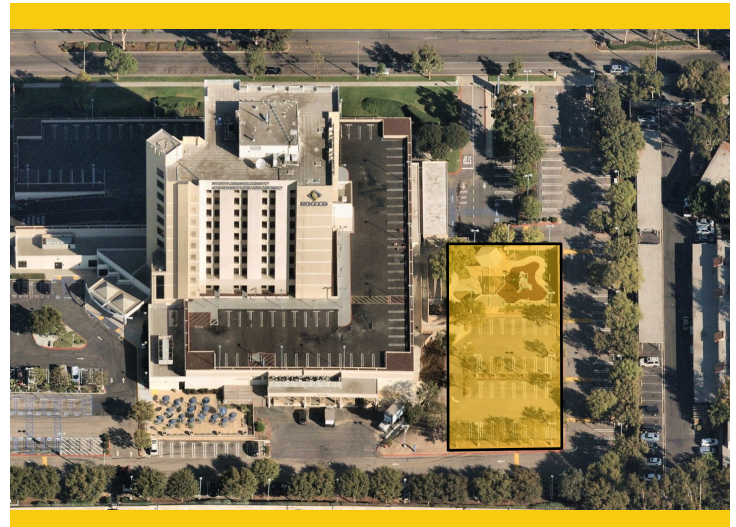


# PROJECT STATUS REPORT – ANAHEIM CAMPUS

## SWING SPACE PROJECTS / INTERIM HOUSING

### BIDDING

<b>Address</b>	<b>1830 W. Romneya Dr. Anaheim, CA 92801</b>
<b>Project Manager</b>	<b>Richard Williams District Director Facilities, Planning, and Construction</b>
<b>Architect of Record</b>	<b>SVA Architects, Inc.</b>
<b>Project Delivery Method</b>	<b>Design-Bid-Build</b>
<b>DSA Application A#</b>	<b>04-120893</b>



### Project Overview

As a result of the upcoming project to complete extensive repairs due to water intrusion at the Upper Deck Parking Lot, there is a need to temporarily relocate classrooms and facilities located on the 1st floor of the Anaheim-NOCE Campus before the start of construction activities. These new temporary modular buildings will allow for NOCE's instruction activities to continue during the repairs to the existing structure. Included are the design, assembly, construction, rent, and dismantling of 12 modular classrooms and associated facilities.

- Total Project Budget .....\$2,115,300
- Estimate Total Project Budget .....\$3,654,510
- Funding Source .....Measure J + Local
  - Measure J .....\$2,000,000
  - Local .....\$1,615,300
- Project Gross Square Footage.....TBD
- Estimated Construction Start.....April 2023
- Targeted Construction Completion .....November 2023
- Temporary Structures Anticipated Dismantlement .....Fall 2025



# PROJECT STATUS REPORT – ANAHEIM CAMPUS

## SWING SPACE—HOTEL, RESTAURANT, AND CULINARY ARTS

### DSA REVIEW

<b>Address</b>	9200 Valley View St. Cypress, CA 90630
<b>Project Manager</b>	Allison Coburn Cypress College
<b>Architect of Record</b>	HPI Architecture
<b>Project Delivery Method</b>	Design-Bid-Build
<b>DSA Application A#</b>	04-121647 Kitchen 04-121568 Lot 1 04-121545 C&R



### Project Overview

As a result of the upcoming project to complete extensive repairs due to water intrusion at the upper deck parking lot part, there is a need to temporarily relocate classrooms and facilities located on the 1st floor of the Anaheim-NOCE Campus before the start of construction activities. A temporary modular building will allow for Cypress College’s Culinary Arts Department instruction activities to continue during the repairs to the existing structure.

- Total Project Budget .....\$2,500,000
- Funding Source .....Measure J
- Project Gross Square Footage.....To Be Determined
- Estimated Construction Start.....May 2023
- Targeted Construction Completion .....December 2023
- Temporary Structures Anticipated Dismantlement .....To be Determined





# PROJECT STATUS REPORT – ANAHEIM CAMPUS

## DEVELOP INTERIOR AND EXTERIOR SIGNAGE

### PROCUREMENT

<b>Address</b>	<b>1830 W. Romneya Dr. Anaheim, CA 92801</b>
<b>Project Manager</b>	<b>Richard Williams District Director Facilities, Planning, and Construction</b>
<b>Architect</b>	<b>Westberg White</b>
<b>Project Delivery Method</b>	<b>Design-Bid-Build</b>
<b>DSA Application A#</b>	<b>04-121174, 04-121175</b>



### Project Overview

Furnish and install new informational and wayfinding signage at indoor and outdoor spaces throughout the Anaheim Campus based on a uniform design standard under development by Westberg White Architecture.

- Total Project Budget .....\$1,146,431
- Funding Source .....Measure J & Local
  - Measure J.....\$1,087,431
  - Local .....\$59,000
- Project Gross Square Footage.....N/A
- Estimated Construction Start.....March 2023
- Targeted Completion .....Spring 2024



# PROJECT STATUS REPORT – ANAHEIM CAMPUS

## ANAHEIM CAMPUS TOWER FIRST FLOOR LIFE/SAFETY RENOVATION DSA REVIEW

<b>Address</b>	<b>1830 W. Romneya Dr. Anaheim, CA 92801</b>
<b>Project Manager</b>	<b>Richard Williams District Director Facilities, Planning, and Construction</b>
<b>Architect</b>	<b>SVA Architects</b>
<b>Project Delivery Method</b>	<b>Design-Bid-Build</b>



### Project Overview

Based on a recent study on water intrusion completed in late 2018 by R2A Architecture in collaboration with KPFF, Rodriguez Engineering, Inc. and Allana Buick & Bers, Inc. several extensive repairs are needed to mitigate and limit the points of water intrusion through the upper deck parking lot surrounding the Anaheim tower.

- Total Project Budget .....\$14,180,000
- Funding Source .....Measure J & State
  - Measure J .....\$3,783,000
  - State .....\$10,397,000
- Project Gross Square Footage.....61,952 ASF
- Estimated Construction Start.....November 2023
- Targeted Completion .....Winter 2024



# PROJECT STATUS REPORT – ANAHEIM CAMPUS

## OUTDOOR PATIO REMODEL DESIGN

<b>Address</b>	<b>1830 W. Romneya Dr. Anaheim, CA 92801</b>
<b>Project Manager</b>	<b>Richard Williams District Director Facilities, Planning, and Construction</b>
<b>Architect</b>	<b>PBK-WLC</b>
<b>Project Delivery Method</b>	<b>Design-Bid-Build</b>



### Project Overview

Addition of a new custom steel shade canopy structure for the creation of an outdoor gathering space for students, faculty, and District personnel. The new structure will be designed to accommodate future solar paneling installation. The project will also address site accessibility from the adjacent parking lot and provide seating and furniture layouts.

- Total Project Budget .....\$1,382,500
- Funding Source .....Measure J
  - Measure J .....\$1,382,500
- Project Gross Square Footage.....2,000 SF Approximately
- Estimated Construction Start.....Spring 2024
- Targeted Construction Completion .....Summer 2024



# PROJECT STATUS REPORT – ANAHEIM CAMPUS

## UPDATE/IMPROVE INFRASTRUCTURE

### IMPLEMENTATION

<b>Address</b>	<b>1830 W. Romneya Dr. Anaheim, CA 92801</b>	<b>Total Project Budget</b>	<b>\$1,766,540 (Measure J)</b>
		<b>Total Budget Allocated</b>	<b>\$1,097,250 (Measure J)</b>
<b>Number of Projects</b>	<b>2</b>	<b>Funding Source</b>	<b>Measure J &amp; Capital Outlay</b>

### General Overview

Projects to address infrastructure improvements or upgrades throughout the Campus. Funds are allocated to projects as needs are identified.

### IT Network Refresh Project Overview

#### IMPLEMENTATION

Assessment of Campus data network infrastructure to identify necessary upgrades, and changes that will enable supporting future Campus needs; specifically addressing wired, wireless, voice, and video networks. Design of a new network will account for the District’s needs specific to logical infrastructure for the next 10 years. Physical infrastructure will also account for the District’s needs for the next 20 years. The scope includes replacing network core switches, providing a more responsive support structure, preparing for cloud computing, and adaptation of Voice over Internet Protocol (VoIP) systems across the District.

- Project Budget ..... \$5,935,452
  - Current Implementation (Measure J) ..... \$754,209
  - Current Implementation (Capital Outlay)..... \$4,935,452
  - Upcoming Phases (Measure J) ..... \$245,791
- Funding Source ..... Measure J & Capital Outlay Funds
- Project Delivery Method ..... California Multiple Award Schedule (CMAS)
- Design Implementation..... VectorUSA
- Architect..... Shandam Consulting
- Project Management ..... District IS / PlanNet Consulting
- Design Implementation Start ..... November 2019
- Targeted Completion ..... June 2023





# PROJECT STATUS REPORT — ANAHEIM CAMPUS

## UPDATES ON CAMPUS PROJECTS - ANAHEIM CAMPUS

### Swing Space Projects / Interim Housing

#### December/January

- All electrical upgrades at Building B have been completed for the temporary space for the District's Printing Department inclusive of the installation of conduits, outlets, and panel capacity. A new double door was installed for the ease of moving equipment and supplies for the Printing Department. Once the printing equipment is moved, all electrical connectivity and functionality will be verified by the general contractor. The general contractor completed repairs to the ceiling panels at the locations where the walls are demolished. In January, work commenced on the flooring replacement from carpeting to vinyl and the repainting of all interior walls with a targeted completion at the end of January.
- The team received approval from DSA for the structural, fire, life, and safety plan check reviews in early December. Mobile Modular addressed all DSA back-check comments. The State agency received submittal responses on December 21 of last year. The team met with DSA on January 4 to coordinate responses and observations between the Design Team and the State agency. Minimal changes were executed relating to access compliance such as the verification of slopes, incline percentages, and railing clarification. The final approval of the Construction Documents (CDs) was anticipated in early January.
- Pacific Plumbing completed a site investigation for the sewer line depth beyond the sewer lift station. The investigation determined the depth and as-built conditions of the main sewer line to which the project will connect. The detail will inform the design solution for the sewer connection of the temporary modular buildings to the existing infrastructure as part of the project CDs.
- The period for questions from firms interested in responding to the Laboratory of Record (LOR) and Inspector of Record (IOR) RFPs concluded in early December. An addendum with responses to the questions has been issued. The team received four proposals for the IOR portion.
- Preliminary layouts for classrooms and pantry have been developed by CSI Fullmer. The proposed setups and furniture selections have been reviewed by faculty and staff for concurrence and approval.



Swing Space / Interim Housing Future Location — July 2021



# PROJECT STATUS REPORT – ANAHEIM CAMPUS

## UPDATES ON CAMPUS PROJECTS - ANAHEIM CAMPUS (Continued)

- As part of the data and connectivity scope of work, the overhead video projectors and screens are planned to be temporarily relocated from the first floor classrooms to the swing space classrooms. Feasibility and verification of the new scope are underway. Additional requirements are being determined to expand the coverage of the existing security cameras and network.
- Development of bidding documents is nearing completion for advertisement upon receipt of DSA approval. The process will be open to all general contracting firms interested in providing a proposal to the District for the execution of this work.

### February

- DSA approved the CDs for the Swing Space-Interim Housing project. The team also met with the Building User Groups (BUG) to finalize furniture layouts for administrative and classroom spaces. SVA Architects will proceed to include edits to the drawings completed outside of the review period and officially incorporate them via an addendum. Updates to the probable cost for project construction are underway based on the DSA-approved set of drawings and specifications. A revised cost estimate is expected by February 13.
- The Campus Project Team also concluded the modular building layouts for the administration, counseling, admissions and records, and student services spaces. CSI Fullmer will be completing all necessary edits to the documents by February 14 before posting for bidding.
- The Campus Project Team is preparing the bid documents for a general contractor selection in the upcoming weeks. In coordination with SVA, the Campus Project Team has concluded work on Division 0 and Division 1 specifications in preparation for project bidding in mid-February. A meeting took place on February 10 to cover this subject. The final documents will be part of the soon to be released bid package.
- The Purchasing Department will release the project documents for public bidding in the last week of February. A mandatory pre-bid job walk is anticipated to take place in the weeks soon after bid posting.
- The team's selection panel has chosen Vital Inspection Services (VIS) and Twining Consulting to act as IOR and LOR respectively. The selection panel took into consideration the best qualifications and acceptable price-point while reviewing all proposals. Purchase Orders will be issued in the second half of the month to finalize contracts with both parties. Their work will start following the Notice to Proceed (NTP) for construction.
- Mobile Modular will be submitting tenant improvement modifications to DSA on the pre-approved modular buildings. The State agency will verify the in-shop changes as they are completed at the fabrication time.



# PROJECT STATUS REPORT – ANAHEIM CAMPUS

## UPDATES ON CAMPUS PROJECTS - ANAHEIM CAMPUS (Continued)

- \$1.5M in additional funds is scheduled to be added to the existing budget from General Funds. This infusion has brought the new budget to approximately \$3.6M. Future adjustments may occur once information produced in the bidding process informs the current estimates.
- Activities for Building B are underway. Installation for flooring and carpeting are nearing completion. The outside wrap will be installed as more favorable weather conditions solidify in the coming weeks. Upon completion of the outside wrap, equipment and other supplies will be shuttled with ease between the central plant and Building B.

### **Anaheim Campus Tower First Floor Life/Safety Renovation**

#### **December/January**

- SVA completed the re-registration with DSA for this project. Submission of the CDs for plan check review has been completed by the January 18 due date. The Design and Campus Project Teams anticipate for the State agency to finish the review by the end of June. Upon approval from DSA, they will be forwarded to CCCC for final review and for authorization to proceed with bidding for the general contractor to conduct the renovation.
- Western Specialty Contractors performed destructive testing investigations in the interior and exterior of the first floor and parking deck. The investigation is inclusive of mold, lead, asbestos, and other noxious materials for their presence in the areas where work will take place. All locations where testing was executed were restored to their original conditions until complete repairs have been executed for this project. SVA assessed the site since the completion of the destructive testing. They have incorporated the findings into the documents to inform the remainder of the design for the project.
- Evaluations for the location of a State-required-all-gender restroom are currently underway. SVA has tentatively identified a space on the first floor that will meet this requirement.
- Coordination is underway between Anaheim and Cypress Campus Project Teams for the relocation of the Swing Space Hotel Restaurant and Culinary Arts.

#### **February**

- DSA has provided a confirmation of a completed CD package for plan check. Reviewers will be assigned in the third week of February to start the process. The AOR anticipates receiving the initial review comments from the State agency in six to eight weeks. The Campus Project Team will conduct an RFP from the District's list of pre-qualified architects to complete a peer review for constructability. The reviewing firm selection and assessment of the CDs are to be completed by the end of the first quarter of 2023.



# PROJECT STATUS REPORT — ANAHEIM CAMPUS

## UPDATES ON CAMPUS PROJECTS - ANAHEIM CAMPUS (Continued)

- The Campus Project Team review of drawings and specifications is in progress based on the submission to DSA in mid-January. Feedback to SVA Architects is anticipated by the end of February for incorporation into the final CDs. In February, meetings with Cypress College Hotel, Restaurant, and Culinary Arts (HRC) will take place for concurrence on the approach described in the CDs. A coordination meeting to review kitchen equipment protection to remain in place during construction will take place on February 22 with faculty. The session will also serve to coordinate strategies for equipment shut-down and protection in preparation for construction activities at the Anaheim Campus in late 2023.
- Updates to the probable cost for project construction are underway based on the DSA-submitted drawings and specifications.
- Executive Environmental completed testing and reporting on samples obtained from the project's recent destructive testing locations. The asbestos and lead-based paint reports did not find any sites with these hazardous materials for this project. However, test results found the presence of quartz silica in small amounts on the retaining walls to be demolished as part of the project's scope of work. The Campus Project Team will include test results and coordinate to fulfill all State requirements to mitigate communication exposure of crews to the hazardous material.

### Develop Interior and Exterior Signage

#### December/January

- The Campus Project Team received DSA approval for this project. A portion of the expected scope of work for signage was previously released for market pricing. The Campus Project team secured the initial piggyback proposal from KYA Group for the exterior signage portion of the project. The team will follow up with the interior portion proposal in the upcoming months.
- The proposed cost and the included scope of work are being reviewed for completeness.

#### February

- The team remains in the process of finalizing pricing for exterior signage for this project. KYA Group is confirming pricing under the California Multiple Award Schedule (CMAS). This State-run program offers an alternative method for procurement using a list of existing suppliers from whom State agencies may acquire products and services, including signage. This project will utilize both CMAS and bidding processes to achieve completion. Preparation for bidding of the interior signage is underway.
- The Campus Project Team received an updated proposal from KYA group for the exterior signage. The team is meeting to discuss the base cost for the bid and any alternates that can be applied at a later time. The interior scope implementation proposal will be made available in March.





# PROJECT STATUS REPORT — ANAHEIM CAMPUS

## UPDATES ON CAMPUS PROJECTS - ANAHEIM CAMPUS (Continued)

### Swing Space Projects—Hotel, Restaurant, and Culinary Arts

#### December/January

- The Campus Project Team is in discussion with DSA and the Orange County Fire Authority over meeting requirements for roadway access by fire trucks in proximity to the swing space structures. Roadway surface testing is underway. If the samples do not meet the current building code requirements, then the team may need to upgrade portions of the parking lot.
- Requisitions have been submitted to District Purchasing for the rental of the kitchen from Mobile Kitchen. The team also submitted a requisition to District Purchasing for the retaining of services from Global Modular. The Design Team is working on acquiring approvals from city agencies. The team submitted the payment to the Health Department and the agency will commence its review after payment processing is completed.

#### February

- The Design Team has received DSA approval for Parking Lot 1 including the barrier removal for the Americans with Disabilities Act (ADA) parking stalls. The Campus and Design Teams are addressing back-check questions from the State agency and completing the gathering of additional details, such as measurements for the current fire water flow pressure at fire hydrants adjacent to the project. Approval for the remaining portions is anticipated in the upcoming weeks. The team plans to move forward with construction in summer 2023 with minimal impact to Campus activities with targeted completion by late fall 2023.
- Two additional CDs packages will be reviewed by the State agency. On February 10, DSA returned back-check comments for the dining and bathroom submission package to HPI, the AOR, where they are under review. Additional ADA path of travel survey is required to be completed in the upcoming weeks to determine whether areas are not compliant with recent code standards. DSA approval is estimated for March. Another package will be resubmitted for the modular kitchen after completion of approval with the Orange County Health Department. The Campus Project Team has recently received the Department's comments that have been addressed with the Design Team. Mobile Kitchen will now be able to procure and outfit the new unit ahead of the Health Department approval prior to DSA resubmission.
- The Council on Budget and Facilities (CBF) has approved additional funds to supplement existing budgets. An estimated \$887K will be designated for the Swing Space-HRC. Next, District Consultation Counsel (DCC) has reviewed and approved this request for the allocation of funding.

### Outdoor Patio Remodel

#### December/January

- A fund number has been issued under Measure J for this project. The team began working on the selection of



# PROJECT STATUS REPORT – ANAHEIM CAMPUS

## UPDATES ON CAMPUS PROJECTS - ANAHEIM CAMPUS (Continued)

an architectural firm to guide the planning process and the execution of the design for this project. Once selected, the AOR will consider the project site location, review of durable canopy solutions, and the ability for the future application of solar panels to the canopy.

### February

- The Campus Project Team has entered into an agreement with PBK-WLC to perform the outdoor patio remodel. In the upcoming months, the Design Team will put together a design schedule and anticipated construction schedule. Meetings will be held with the Campus Project Team and the Building User Group (BUG) of the space to develop initial iterations of the design.
- The first meeting took place between PBK-WLC and the Campus Project Team on February 15 to discuss Building User Group (BUG) requirements and a draft schedule for the execution of the design.

## Update / Improve Infrastructure

### IT Network Refresh Project

- Refer to page 38-39 of this report for the overall project and Campus-specific updates.



# PROJECT STATUS REPORT – DISTRICT-WIDE

## UPDATES ON DISTRICT-WIDE PROJECTS

### Update / Improve Infrastructure

#### IT Network Refresh Project

#### District-Wide

##### December/January

- VectorUSA worked on the transition to the new network infrastructure including the WIFI and computer connection. Crews completed work at Anaheim Campus in early December. Work began at Cypress Campus by mid-December, and Fullerton Campus followed after that. Installation was expected to be completed in late 2022. Upon completion of this work, Fullerton Campus began its transition to Voice over IP (VoIP). All VoIP activity will be finalized after the work concludes at Fullerton Campus. This includes activation of E911 services and Cisco Call Center at all sites .
- In December, closeout activities for completed items were underway. The District was expected to release the 5% retention to VectorUSA upon completion. Transfers were underway for expenditures from Capital Outlay to Measure J. The transfer realigned the purchases of CMAS-applicable equipment. This was not anticipated to be completed until the first quarter of 2023.
- The team developed the content for Change Order No. 4 regarding the changes and deletion of components from the final list of equipment to be installed at all sites. Deleted items from the current scope were experiencing extended estimated delivery times due to supply chain issues. These scopes of work were anticipated to be addressed by other implementation phases in the upcoming months. A Board Agenda Item (BAI) will be submitted at the January 24, 2023 Board of Trustees' meeting.

##### February

- Since the Board of Trustees approved Change Order No. 4, District IS and VectorUSA are working to descope projects that will not finish by the new completion date set for June 30. New purchase orders will be reissued to maintain the project's place in line for the delivery of the outstanding back-ordered items with long lead times.

#### Cypress Campus

##### December/January

- Testing was underway in non-instructional areas since the recent equipment infrastructure installation by VectorUSA. The transition will begin upon completion.

##### February

- District IS, in collaboration with the Campus Project Team, has updated cabling requirements in the IT



## UPDATES ON DISTRICT-WIDE PROJECTS (Continued)

standards. District IS is also addressing requested temperature and humidity sensors to detect and protect against dangerous temperature changes at the data center. Installation of the Access Points (APs) has been completed for Cypress Campus. Documentation for project closeout is finalized. Voice over Internet Protocol (VoIP) migration is anticipated to occur from February to March. Employee roaming has been completed at Anaheim and Cypress campuses giving employees the ability to utilize their home sign-in credentials to access WIFI at either location.

### Fullerton Campus

#### December/January

- Fullerton Academic Computing Technologies (ACT) carried out a reassessment of phone locations due to changes in faculty and personnel office locations throughout the Campus since the original Network Refresh project scoping. The Campus Project Team worked with VectorUSA to verify and determine new extension locations for pre-programmed phones expeditiously to avoid delays in deployment.

#### February

- Wireless surveys are in progress. Voice over Internet Protocol (VoIP) migration is scheduled to occur in two phases at Fullerton Campus. The first phase is projected to be completed by mid-March. Phase two is anticipated to conclude in April. However, due to recent personnel relocation within the Campus Buildings, the earlier scope of work is no longer matching the locations for the deployments for the phones. VectorUSA is working to revise the existing scope of work based on the changing calibration of personnel and their corresponding data access points.

### Anaheim

#### December/January

- There are no updates for this reporting period.

#### February

- The Uninterrupted Power Supply (UPS) and Protocol Data Units (PDUs) have been installed. Employee roaming has been completed at Anaheim and Cypress campuses giving employees the ability to utilize their home sign-in credentials to access WIFI at either location.





# COMPLETED PROJECTS

- CYPRESS CAMPUS
- FULLERTON CAMPUS
- NOCE – ANAHEIM CAMPUS & DISTRICT OFFICES



# COMPLETED PROJECTS

## Cypress Campus

Project Name	Funding Sources	Final Project Cost	Completion Date
Swing Space Projects - Gym II Improvements	Measure J	\$124,683	July 2018
Swing Space Projects - Parking Lot 5 Realignment	Measure J	\$2,001,369	September 2018



Completed Parking Lot 5 Realignment from the Library & Learning Resource Center (LLRC) at Cypress College

Mass Communication & Security Systems Upgrade: Safety Film	Measure J	\$145,772	January 2019
Mass Communication & Security System Upgrade: Door Replacement	Measure J	\$50,671	January 2019
Update / Improve Infrastructure: Central Plant Upgrades	Measure J	\$58,768	October 2020
Baseball Field Improvements	Measure J and Local	Meas. J = \$1,905,141 Local = \$159,467	May 2021



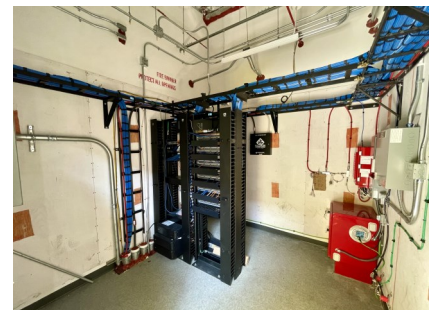
Completed Baseball Field Improvements at Cypress College



# COMPLETED PROJECTS

## Cypress Campus (continued)

Project Name	Funding Sources	Final Project Cost	Completion Date
New Science, Engineering, and Mathematics Building	Measure J Local Federal	Meas J = \$94,068,202 Local = \$3,000,000 Federal = \$791,352 Sche. Maint. = \$53,584	September 2021
Update / Improve Infrastructure (New SEM)	Measure J	\$2,805,131	September 2021
Update / Improve Infrastructure (IT-New SEM)	Measure J	\$645,883	September 2021
Mass Communications & Security Systems Upgrade (New SEM)	Measure J	\$389,367	September 2021

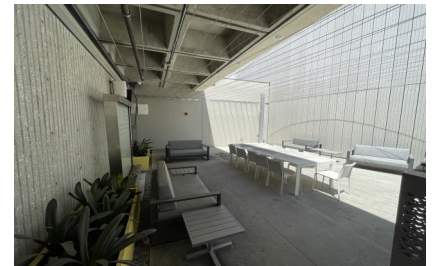
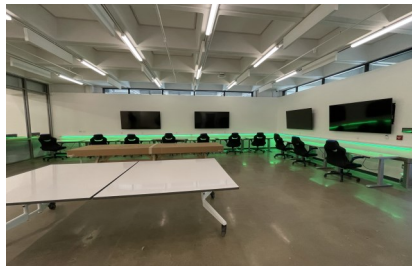


Completed New Science, Engineering, and Mathematics Building at Cypress College

# COMPLETED PROJECTS

## Cypress Campus (continued)

New Veterans' Resource Center / Student Activities Center Expansion	<b>Measure J Local</b>	<b>Meas J. = \$13,411,167 Local = \$89,764</b>	July 2021
Update / Improve Infrastructure (VRC/SAC)	<b>Measure J</b>	<b>\$1,077,912</b>	July 2021
Update / Improve Infrastructure (IT-VRC/SAC)	<b>Measure J</b>	<b>\$181,761</b>	July 2021
Mass Communications & Security Systems Upgrade (VRC/SAC)	<b>Measure J</b>	<b>\$60,938</b>	July 2021



Completed New VRC / SAC at Cypress College





# COMPLETED PROJECTS

## Cypress Campus (continued)

Veterans' Memorial Bridge, Plaza, and Tribute Garden	Local	\$1,365,397	July 2021
------------------------------------------------------	-------	-------------	-----------



Completed Veteran's Memorial Bridge, Plaza, and Tribute Garden at Cypress College

Pond Refurbishment	Local	\$623,873	July 2021
--------------------	-------	-----------	-----------



Completed Pond Refurbishment at Cypress College



# COMPLETED PROJECTS

## Fullerton Campus

Project Name	Funding Sources	Final Project Cost	Project Start Date	Completion Date
Update and Improve Infrastructure / Buildings 300-500 Sewer Line	Measure J and Scheduled Maintenance	Meas. J = \$444,702 Local = \$85,559	May 2018	July 2020



Completed Sewer Line Replacement to Buildings 300 and 500 at Fullerton College

Project Name	Funding Sources	Final Project Cost	Completion Date
Greenhouse Replacement	Measure J and Local	Meas. J = \$398,664 Local = \$989,272	August 2021



Completed Greenhouse Replacement at Fullerton College



# COMPLETED PROJECTS

## Fullerton Campus (Continued)

Project Name	Funding Sources	Final Project Cost	Completion Date
Central Plant Replacement & Expansion	Measure J	\$9,000,521	September 2021



Completed Central Plant Replacement & Expansion at Fullerton College

Project Name	Funding Sources	Final Project Cost	Completion Date
New Instructional Building	Measure J	\$50,137,300	March 2022
	Local	\$828,489	
Update/Improve Infrastructure (IT-New Instructional Building)	Measure J	\$278,982	March 2022

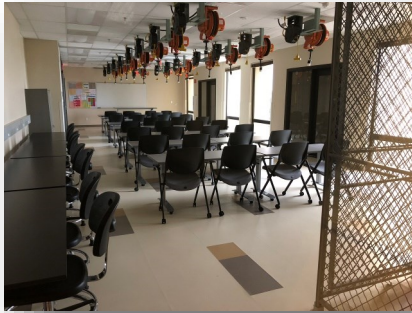


Completed New Instructional Building at Fullerton College

# COMPLETED PROJECTS

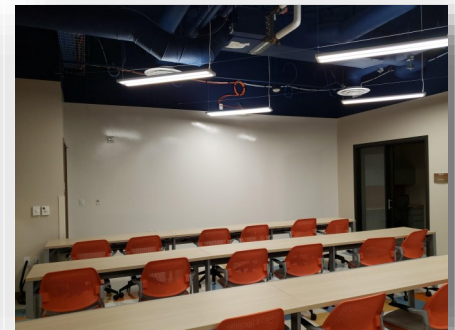
## NOCE—Anaheim Campus & District Offices

Project Name	Funding Sources	Final Project Cost	Completion Date
5th Floor CTE Laboratory and 2nd Floor Room 215	Measure J	\$640,736	September 2018



Views of the Completed 5th Floor CTE Lab for North Orange Continuing Education at Anaheim Campus

Project Name	Funding Sources	Final Project Cost	Completion Date
7th and 10th Floors Buildout	Measure J and Measure X	Meas. J = \$949,134  Meas. X = \$4,252,430	June 2019



Completed lobby and co-working spaces on the 7th and 10th Floors at Anaheim Campus





# COMPLETED PROJECTS

## NOCE—Anaheim Campus & District Offices (continued)

Project Name	Funding Sources	Final Project Cost	Completion Date
Secondary MDF Room	Measure J	\$97,250	March 2021



Views of the Secondary MDF Room at the Anaheim Campus Central Plant Mezzanine

# FINANCIAL REVIEW

- Capital Projects Update
- Estimated Project Budgets
- 90-Day Look Ahead Schedule

# CAPITAL PROJECT UPDATES

**North Orange County Community College District  
Measure J  
Capital Projects Update  
As of January 31, 2023**

**Bond Authorization:**

Bond Authorization	574,000,000	100.00%
Bonds Sold - Series A + B + C	400,000,000	69.69%
<b>Available Principal Amount of Bonds</b>	<b>174,000,000</b>	<b>30.31%</b>

**Bond Funding Sources (Budget):**

		Actual Received	Remaining Balance
Bond Authorization	574,000,000	400,000,000	174,000,000
Estimated Net Interest Earnings	13,000,000	11,028,778	1,971,222
<b>Totals</b>	<b>587,000,000</b>	<b>411,028,778</b>	<b>175,971,222</b>

**Cost Status:**

Campus	Total Budget	%	Actual Expenses to Date	Remaining Balance
Anaheim Campus	23,107,800	3.93%	3,170,820	19,936,980
Cypress Campus	225,921,200	38.49%	121,660,503	104,260,697
Fullerton Campus	313,626,400	53.43%	71,331,108	242,295,292
District Expenses				
• Program Management	20,000,000	3.41%	8,061,262	11,938,738
• Bond Issuance Cost	3,544,600	0.60%	1,676,210	1,868,390
• Other Bond Expense	800,000	0.14%	759,952	40,048
<b>Totals</b>	<b>587,000,000</b>	<b>100.00%</b>	<b>206,659,855</b>	<b>380,340,145</b>



# ESTIMATED PROJECT BUDGETS

## CYPRESS CAMPUS

### CURRENT PROJECTS

### PROJECT BUDGET/VARIANCE REPORT—CYPRESS

CURRENT PROJECTS	Measure J Budget OCT FY 2022-23	Measure J Budget JAN FY 2022-23	Variance	Measure J Expenses Thru JAN 2023	Balance
Swing Space Projects	\$ 1,034,003	\$ 1,034,003	\$ -	\$ 10,391	\$ 1,023,612
Swing Space Fine Arts (Old SEM)	\$ 5,626,285	\$ 5,626,285	\$ -	\$ 1,728,087	\$ 3,898,198
Swing Space Tech I/ Tech III (Old SEM)	\$ -	\$ -	\$ -	\$ -	\$ -
Fine Arts Building Renovation	\$ 33,413,861	\$ 33,413,861	\$ -	\$ 1,393,286	\$ 32,020,575
Update/Improve Infrastructure	\$ 8,482,599	\$ 8,482,599	\$ -	\$ -	\$ 8,482,599
Update/Improve Infrastructure (IT)	\$ 5,101,587	\$ 5,101,587	\$ -	\$ 1,966,608	\$ 3,134,979
Update/Improve Infrastructure (Under Piazza & Stairwell Restoration)	\$ 3,300,000	\$ 3,300,000	\$ -	\$ -	\$ 3,300,000
Update/Improve Infrastructure (Piazza Above SAC)	\$ 3,000,000	\$ 3,000,000	\$ -	\$ -	\$ 3,000,000
Library-Learning Resource Center Expansion	\$ 4,046,665	\$ 4,046,665	\$ -	\$ -	\$ 4,046,665
EV SCE Charging Stations	\$ 492,000	\$ 492,000	\$ -	\$ -	\$ 492,000
LLRC Secondary Data center - Phase II	\$ 500,000	\$ 500,000	\$ -	\$ 350,273	\$ 149,727
Central Plant Upgrade	\$ 7,000,000	\$ 7,000,000	\$ -	\$ -	\$ 7,000,000
Mass Communications & Security Systems Upgrade	\$ 1,942,855	\$ 1,942,855	\$ -	\$ -	\$ 1,942,855
Campus-Wide Security Systems Upgrade	\$ 1,816,170	\$ 1,816,170	\$ -	\$ -	\$ 1,816,170
Campus-Wide Security Systems Upgrade (Phase 1)	\$ 371,367	\$ 371,367	\$ -	\$ 301,046	\$ 70,321
Pool Restoration and Upgrade	\$ 3,909,470	\$ 3,909,470	\$ -	\$ -	\$ 3,909,470
Tech I/Tech III CTE Complex	\$ 28,337,107	\$ 28,337,107	\$ -	\$ -	\$ 28,337,107
Planning (Non Project Specific)	\$ 544,000	\$ 544,000	\$ -	\$ 517,441	\$ 26,559
<b>COMPLETED PROJECTS</b>					
New Science, Engineering, and Mathematics Building	\$ 94,068,202	\$ 94,068,202	\$ -	\$ 93,744,743	\$ 323,459
Update/Improve Infrastructure (New SEM)	\$ 2,805,131	\$ 2,805,131	\$ -	\$ 2,805,131	\$ -
Mass Communications & Security Systems Upgrade (New SEM)	\$ 389,367	\$ 389,367	\$ -	\$ 389,367	\$ -
Update/Improve Infrastructure (IT - New SEM)	\$ 645,883	\$ 645,883	\$ -	\$ 645,883	\$ -
New Veterans' Resource Center & Student Activities Center Expansion	\$ 13,411,167	\$ 13,411,167	\$ -	\$ 12,124,765	\$ 1,286,402
Update/Improve Infrastructure (VRC/SAC)	\$ 1,077,912	\$ 1,077,912	\$ -	\$ 1,077,912	\$ -
Mass Communications & Security Systems Upgrade (VRC/SAC)	\$ 60,938	\$ 60,938	\$ -	\$ 60,938	\$ -
Update/Improve Infrastructure (IT - VRC/SAC)	\$ 181,761	\$ 181,761	\$ -	\$ 181,761	\$ -
Veterans' Memorial Bridge and Tribute Garden	\$ -	\$ -	\$ -	\$ -	\$ -
Baseball Field Improvements	\$ 1,905,141	\$ 1,905,141	\$ -	\$ 1,905,141	\$ -
Swing Space - Gym II Renovation	\$ 124,682	\$ 124,682	\$ -	\$ 124,682	\$ -
Swing Space - Parking Lot 5 Expansion	\$ 2,001,369	\$ 2,001,369	\$ -	\$ 2,001,369	\$ -
Swing Space - Old SEM (Roofing)	\$ 76,467	\$ 76,467	\$ -	\$ 76,467	\$ -
Update/Improve Infrastructure (Central Plant Enhancements)	\$ 58,768	\$ 58,768	\$ -	\$ 58,768	\$ -
Mass Communications & Security Systems Upgrade (Safety Film)	\$ 145,772	\$ 145,772	\$ -	\$ 145,772	\$ -
Mass Communications & Security Systems Upgrade (Door Replacement)	\$ 50,671	\$ 50,671	\$ -	\$ 50,671	\$ -
<b>SUB TOTAL</b>	<b>\$ 225,921,200</b>	<b>\$ 225,921,200</b>	<b>\$ -</b>	<b>\$ 121,660,503</b>	<b>\$ 104,260,697</b>

1. ETR 2022-003 Expenses from LLRC to SEM, VRC and Planning
2. Financial close-out is in progress. Contract balances will be transferred to active projects.





# ENCUMBRANCES OVER \$10,000

## CYPRESS CAMPUS - New Encumbrances (Dec. 2022 - Jan. 2023)

Project	Vendor	Purchase Order No.	Purchase Order Amount	Scope of Work
Swing Space—Fine Arts	Sundt Construction, Inc.	P0152755	\$96,546.00	Construction Management
Fine Arts Building Renovation	Sundt Construction, Inc.	P0145275	\$26,653.30	Preconstruction Services
Swing Space—Fine Arts	Stephen Payte DSA Inspections, Inc.	P0152505	\$28,080.00	DSA Inspections
Swing Space—Fine Arts	New Dynasty Construction Co.	P0152120	\$394,405.06	General Contractor
Swing Space—Fine Arts	DLR Group	P0145329	\$53,851.84	Engineering Services



# ESTIMATED PROJECT BUDGETS

## FULLERTON CAMPUS

### CURRENT PROJECTS

### PROJECT BUDGET/VARIANCE REPORT—FULLERTON

CURRENT PROJECTS	Measure J Budget OCT FY 2022-23	Measure J Budget JAN FY 2022-23	Variance	Measure J Expenses Thru JAN 2023	Balance
Renovate Buildings 300	\$ 22,982,000	\$ 22,982,000	\$ -	\$ 1,874,553	\$ 21,107,447
New M & O Building	\$ 6,758,944	\$ 6,758,944	\$ -	\$ 691,273	\$ 6,067,671
Chapman / Newell Instructional Building	\$ 21,985,777	\$ 27,035,987	\$ 5,050,210	\$ 1,569,004	\$ 25,466,983
New Performing Arts Complex—Demolish Buildings 1100 and 1300	\$ 72,615,608	\$ 78,884,034	\$ 6,268,426	\$ 1,650,424	\$ 77,233,610
New Welcome Center & Lot C West	\$ 37,353,872	\$ 37,353,872	\$ -	\$ -	\$ 37,353,872
New Horticulture/Lab School/STEM Lab	\$ 33,813,764	\$ 33,813,764	\$ -	\$ -	\$ 33,813,764
Demolish Building 2000	\$ 1,108,000	\$ -	\$ (1,108,000)	\$ -	\$ -
New Parking Structure	\$ 11,219,260	\$ 11,219,260	\$ -	\$ -	\$ 11,219,260
Update/Improve Infrastructure	\$ 20,062,352	\$ 17,741,721	\$ (2,320,631)	\$ -	\$ 17,741,721
Update/Improve Infrastructure (IT)	\$ 7,721,018	\$ 7,721,018	\$ -	\$ 5,173,289	\$ 2,547,729
Landscape & Hardscape Improvements	\$ 3,840,000	\$ 3,840,000	\$ -	\$ -	\$ 3,840,000
Demolish Building 1901-04, 1956-60, 3000	\$ 1,333,000	\$ -	\$ (1,333,000)	\$ -	\$ -
Parking Lot Improvements at Building 3000	\$ 1,999,500	\$ -	\$ (1,999,500)	\$ -	\$ -
Demolish Buildings 2200 & 3104	\$ 1,392,209	\$ -	\$ (1,392,209)	\$ -	\$ -
Planning (Non Project Specific)	\$ 595,000	\$ 595,000	\$ -	\$ 306,044	\$ 288,956
Wilshire Chiller Plant Relocation	\$ 3,100,000	\$ 5,420,631	\$ 2,320,631	\$ 115,555	\$ 5,305,076
<b>COMPLETED PROJECTS</b>					
New Instructional Building	\$ 53,588,031	\$ 50,137,300	\$ (3,450,731)	\$ 50,126,554	\$ 10,747
Update/Improve Infrastructure (IT - Instructional Bldg.)	\$ 278,982	\$ 278,982	\$ -	\$ -	\$ 278,982
Central Plant Replacement & Expansion	\$ 10,600,000	\$ 9,000,521	\$ (1,599,479)	\$ 8,981,047	\$ 19,474
Greenhouse Replacement	\$ 834,381	\$ 398,664	\$ (435,717)	\$ 398,664	\$ 0
Update/Improve Infrastructure (Bldg 300-500 Sewer Line)	\$ 444,702	\$ 444,702	\$ -	\$ 444,702	\$ -
<b>SUSPENDED PROJECTS</b>					
Renovate Building 840 Campus Services	\$ -	\$ -	\$ -	\$ -	\$ -
New Thermal Energy Storage (TES)	\$ -	\$ -	\$ -	\$ -	\$ -
Renovate Building 600	\$ -	\$ -	\$ -	\$ -	\$ -
Renovate Health Center	\$ -	\$ -	\$ -	\$ -	\$ -
Renovate Faculty Lounge & Offices	\$ -	\$ -	\$ -	\$ -	\$ -
Renovate Wellness Center	\$ -	\$ -	\$ -	\$ -	\$ -
Renovate Building 3100	\$ -	\$ -	\$ -	\$ -	\$ -
Renovate Building 2100	\$ -	\$ -	\$ -	\$ -	\$ -
<b>SUB TOTAL</b>	<b>\$ 313,626,400</b>	<b>\$ 313,626,400</b>	<b>\$ 0</b>	<b>\$ 71,331,108</b>	<b>\$ 242,295,292</b>

1. Financial close-out is in progress. Contract balances will be transferred to active projects.
2. PETR 2023-24 FC transferred Measure J Budget Suspended Projects to New PAC Project.
3. PETR 2023-25 FC transferred Measure J Available Budget from CUP and new IB to Chapman/Newell Project, from New IB HEERF Balance to HEERF Fund, and MJ Budget from Update/Improve Infrastructure to Chapman/Newell Project.
4. PETR 2023-28 FC transferred Measure J Remaining Balance Budget of Greenhouse Replacement Project to New PAC Project. Greenhouse Replacement Project is complete.



# ENCUMBRANCES OVER \$10,000

## FULLERTON CAMPUS - New Encumbrances (Dec. 2022 - Jan. 2023)

Project	Vendor	Purchase Order No.	Purchase Order Amount	Scope of Work
Wilshire Chiller Plant Relocation	Pfeiffer Partners Architects, Inc.	P0151619	\$22,710.00	Architectural & Engineering Services
Renovate Building 300	Westberg-White, Inc.	P0151618	\$189,750.00	Architectural & Engineering Services



# ESTIMATED PROJECT BUDGETS

## ANAHEIM CAMPUS

### CURRENT PROJECTS

### PROJECT BUDGET/VARIANCE REPORT—ANAHEIM

CURRENT PROJECTS	Measure J Budget OCT FY 2022-23	Measure J Budget JAN FY 2022-23	Variance	Measure J Expenses Thru JAN 2023	Balance
Update/improve Infrastructure	\$ 669,290	\$ 669,290	\$ -	\$ -	\$ 669,290
Update/improve Infrastructure (IT)	\$ 1,000,000	\$ 1,000,000	\$ -	\$ 748,411	\$ 251,589
Develop Interior and Exterior Signage	\$ 1,087,431	\$ 1,087,431	\$ -	\$ 117,149	\$ 970,282
Second Floor Tenant Improvements	\$ 813,000	\$ 813,000	\$ -	\$ -	\$ 813,000
Swing Space Projects/ Interim Housing	\$ 2,000,000	\$ 2,000,000	\$ -	\$ 205,457	\$ 1,794,543
Swing Space Hotel, Restaurant, and Culinary Arts	\$ 2,500,000	\$ 2,500,000	\$ -	\$ 235,266	\$ 2,264,735
Anaheim Campus Tower First Floor Life/Safety Renovation	\$ 2,183,000 <sup>1</sup>	\$ 3,783,000	\$ 1,600,000	\$ 167,943	\$ 3,615,057
Upper Deck Enhancements	\$ 309,901	\$ 309,901	\$ -	\$ -	\$ 309,901
1st. Floor Remodel Student Center and Classrooms	\$ 2,352,720	\$ 2,352,720	\$ -	\$ -	\$ 2,352,720
Pedestrian and Vehicular Traffic Flow	\$ 2,329,000	\$ 2,329,000	\$ -	\$ -	\$ 2,329,000
4th Floor Improvements	\$ 218,000	\$ 218,000	\$ -	\$ -	\$ 218,000
Outdoor Patio Remodel	\$ 1,382,500	\$ 1,382,500	\$ -	\$ -	\$ 1,382,500
Develop Drop-Off Plaza at Romney Drive	\$ 569,000	\$ 569,000	\$ -	\$ -	\$ 569,000
Holding Account	\$ 1,600,000 <sup>1,2</sup>	\$ 2,000,000	\$ 400,000	\$ -	\$ 2,000,000
Planning (Non Project Specific)	\$ 406,838	\$ 406,838	\$ -	\$ 9,475	\$ 397,363
<b>COMPLETED PROJECTS</b>					
Update/Improve Infrastructure (Secondary MDF)	\$ 97,250	\$ 97,250	\$ -	\$ 97,250	\$ -
7th and 10th Floors Buildout	\$ 949,134	\$ 949,134	\$ -	\$ 949,134	\$ -
5th Floor CTE & 2nd Floor Room 215	\$ 640,736	\$ 640,736	\$ -	\$ 640,736	\$ -
<b>SUSPENDED PROJECTS</b>					
Develop Intersection at Romney & Coronet	\$ -	\$ -	\$ -	\$ -	\$ -
<b>SUB TOTAL</b>	<b>\$ 21,107,800</b>	<b>\$ 23,107,800</b>	<b>\$ 2,000,000</b>	<b>\$ 3,170,820</b>	<b>\$ 19,936,980</b>

1. PETR 2023-025 AC MJ augmented Anaheim Tower First Floor Life/Safety Renovation Project from Holding Account Project

2. PETR 2023-026 AC MJ augmented Holding Account Project from Estimate Interest Earned



# ENCUMBRANCES OVER \$10,000

## ANAHEIM CAMPUS - New Encumbrances (Dec. 2022 - Jan. 2023)

Project	Vendor	Purchase Order No.	Purchase Order Amount	Scope of Work
Develop Interior and Exterior Signage	Westberg-White, Inc.	P0143701	\$12,660.00	Architectural & Engineering Services





# ESTIMATED PROJECT BUDGETS

## DISTRICT

### PROJECT BUDGET/VARIANCE REPORT—DISTRICT

DISTRICT WIDE EXPENSE	Measure J Budget OCT FY 2021-22	Measure J Budget JAN FY 2022-23	Variance	Measure J Expenses Thru JAN 2023	Balance
Program Management Fees	\$ 20,000,000	\$ 20,000,000	\$ -	\$ 8,061,262	\$ 11,938,738
Bond Issuance Cost	\$ 3,544,600	\$ 3,544,600	\$ -	\$ 1,676,210	\$ 1,868,390
Other	\$ 800,000	\$ 800,000	\$ -	\$ 759,952	\$ 40,048
<b>SUB TOTAL</b>	<b>\$ 24,344,600</b>	<b>\$ 24,344,600</b>	<b>\$ -</b>	<b>\$ 10,497,424</b>	<b>\$ 13,847,176</b>



# ENCUMBRANCES OVER \$10,000

## DISTRICT - New Encumbrances (Dec. 2022 - Jan. 2023)

- No new encumbrances for the current reporting period



# ACTIVE PROJECTS

## 90 - DAY LOOK AHEAD



NORTH ORANGE COUNTY COMMUNITY COLLEGE DISTRICT  
**CYPRESS - FULLERTON - ANAHEIM (NOCE)**  
**90-DAY LOOK AHEAD SCHEDULE**  
 (03-01-23 TO 05-31-23)



	March				April				May				Comments	
	7	14	21	28	4	11	18	25	2	9	16	23		30
<b>GENERAL</b>														
NOCCCD Board Meetings														March 14th, 28th, April 11th, 25th, and May 9th, 23rd
COC Meetings														March 1st (in Person Meeting with Zoom Link at Anaheim Campus)
Bond Program Management Team Mtgs.														March 21st, April 18th, and May 16th (meeting held via Zoom)
<b>PLANNING</b>														
<b>ANAHEIM</b>														
Outdoor Patio Remodel														In Progress
<b>DESIGN PHASE</b>														
<b>ANAHEIM</b>														
<b>CYPRESS</b>														
<b>FULLERTON</b>														
<b>DSA PHASE &amp; AGENCY REVIEW</b>														
<b>ANAHEIM</b>														
Swing Space - Hotel, Restaurant, and Culinary Arts														In Progress
Anaheim Campus Tower First Floor Life/Safety Renovation														In Progress
<b>CYPRESS</b>														
Electrical Vehicles (EV) SCE Charging Stations-Lot 4														Submittal to DSA Upcoming March 7th
<b>FULLERTON</b>														
Renovate Building 300														In Progress
New M&O Building														In Progress
Chapman/Newell Instructional Building														In Progress
New Performing Arts Complex														In Progress
Wilshire Chiller Plant Replacement														In Progress
<b>BIDDING</b>														
<b>ANAHEIM</b>														
Swing Space - Interim Housing														
Job walk / Addendum / Bid Due														In Progress-Bid Due March 10th
General Contractor Selection / Board Approval / Notice to Proceed														Upcoming
Develop Interior and Exterior Signage														In Progress
Swing Space - Hotel, Restaurant, and Culinary Arts														Upcoming April
<b>CYPRESS</b>														
Fine Arts Building Renovation														In Progress (Pending CCCC to review and approval for bidding)
<b>PRE-CONSTRUCTION PHASE</b>														
<b>CONSTRUCTION PHASE</b>														
<b>ANAHEIM</b>														
Develop Interior and Exterior Signage														Upcoming late March (Exterior Signage)
<b>CYPRESS</b>														
Campus wide security systems upgrades (phase 1)														In Progress (Pending delivery of back ordered components)
Swing Space - Fine Arts (Old SEM)														
Punch List														In Progress
Demobilization General Contractor / Furniture Installation														Upcoming April
<b>NETWORK REFRESH</b>														
Wireless Surveys - Phase 2														Testing network wireless signal coverage
Network Cutover -BFH														Migration of network identity to source destination
Network & VoIP Migration - AEBG														Migration data to a new network / Voice over Internet Protocol
<b>Cypress</b>														
VoIP Migration														Voice over Internet Protocol migration
<b>Fullerton</b>														
VoIP Migration (Phase 1)														Voice over Internet Protocol migration
VoIP Migration (Phase 2)														Voice over Internet Protocol migration
Network Cutover														Migration of network identity to source destination
<b>CLOSE-OUT PHASE</b>														
<b>IT Network Refresh</b>														
Network Refresh														In progress
<b>CYPRESS</b>														
Campus wide security systems upgrades (phase 1)														In Progress
LLRC Secondary Data Center (Phase 2)														In Progress
Swing Space - Fine Arts (Old SEM)														Upcoming April
New SEM														In Progress

\* Non-Measure J expenditure activities







**March 2023**

# Citizens' Oversight Committee

**COCC**

## **Measure J Bond Program**

