

June 2021



**CAPITAL PROJECTS REPORT**  
to the

**Citizens' Oversight Committee**



**Intentionally Left Blank**

# TABLE OF CONTENTS

## Active Project Status Report

### *Cypress Campus*

Campus Aerial View .....	2
New Science, Engineering, and Mathematics Building.....	3
New Veterans' Resource Center & Student Activities Center Expansion .....	4
Veterans' Memorial Bridge, Plaza, & Tribute Garden .....	5
Pond Refurbishment .....	6
Athletic Field Realignment - Baseball Field Improvements .....	7
Fine Arts Building Renovation .....	8
Update / Improve Infrastructure.....	9
Mass Communication & Security Systems Upgrade.....	10
Updates on Campus Projects - Cypress College .....	11-15

### *Fullerton Campus*

Campus Aerial View .....	16
Greenhouse Replacement .....	17
New Instructional Building .....	18
Central Plant Replacement & Expansion .....	19
Renovate Buildings 300 & 500 .....	20
New Maintenance & Operation Building .....	21
Chapman / Newell Instructional Building.....	22
New Performing Arts Complex - Demolish Buildings 1100 and 1300 .....	23
Update / Improve Infrastructure.....	24
Updates on Campus Projects - Fullerton College .....	25-31

### *Anaheim Campus*

Campus Aerial View .....	32
Secondary MDF Room .....	33
Swing Space Projects / Interim Housing.....	34
Develop Interior And Exterior Signage .....	35
Upper Deck Parking Lot Refurbishment .....	36
Update / Improve Infrastructure.....	37
Updates on Campus Projects - Anaheim Campus .....	38

## Completed Projects

Cypress College .....	40
Fullerton College .....	41
NOCE - Anaheim Campus & District Offices .....	42

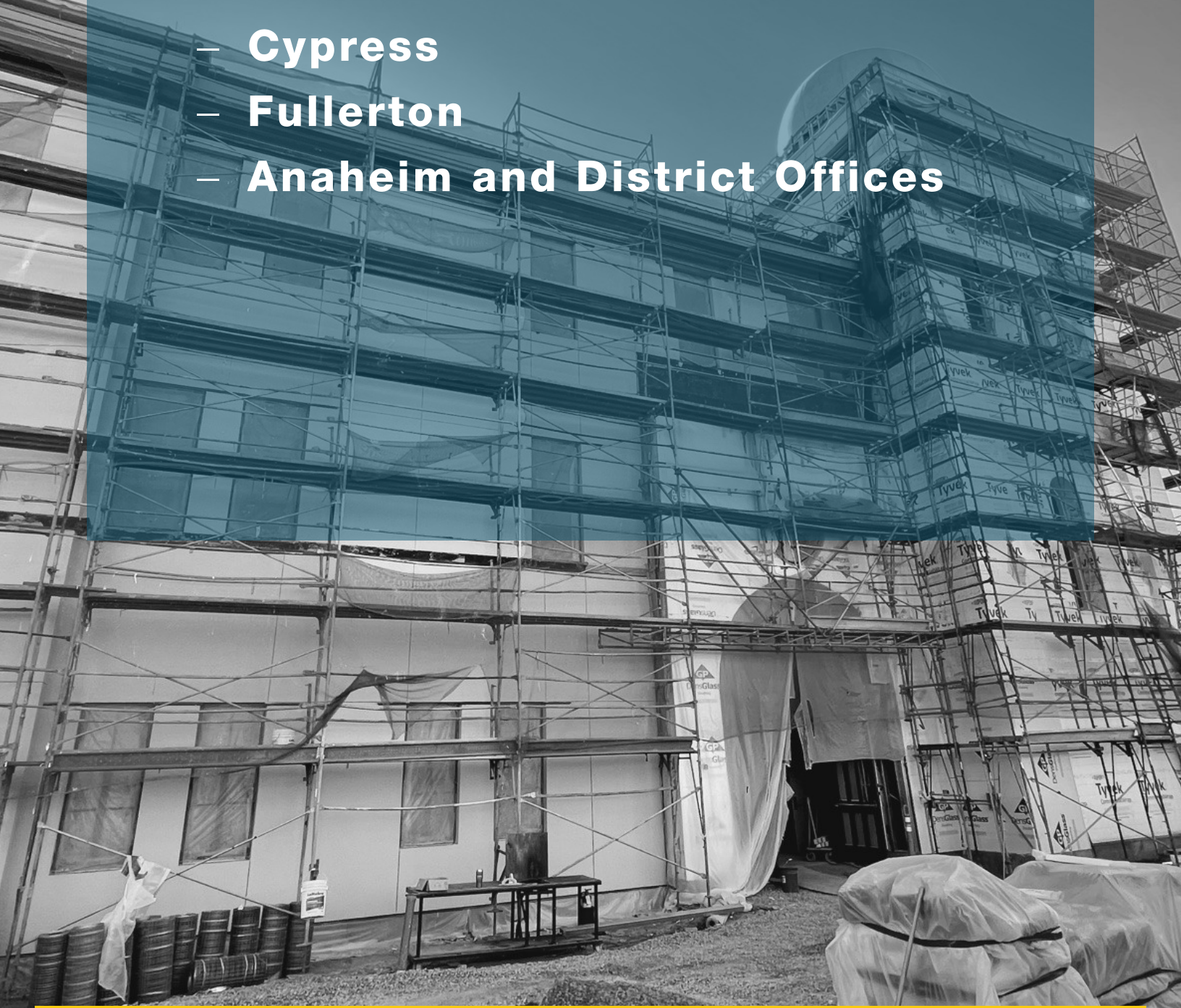
## Financial Review

<i>Capital Project Updates - Measure J</i> .....	44
Estimated Project Budgets & Purchase Orders Over \$10,000 .....	46-53
Cypress Campus.....	45
Fullerton Campus.....	48
Anaheim Campus.....	50
District .....	52
90-Day Look Ahead Schedule .....	54-55

# Active Project Status Report

## Campus Projects

- Cypress
- Fullerton
- Anaheim and District Offices



# AERIAL VIEW — CYPRESS CAMPUS PROJECTS



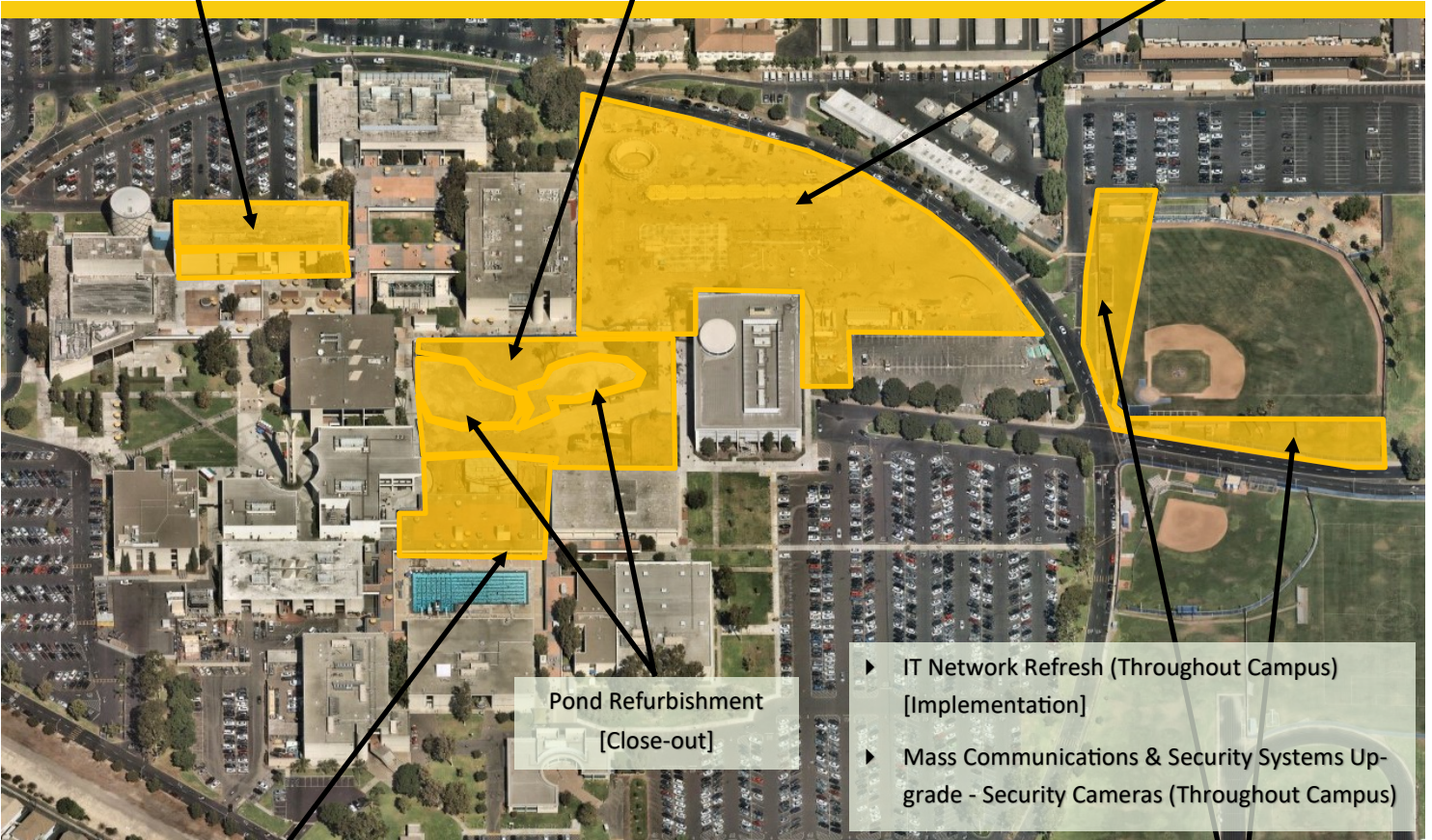
Fine Arts Building Renovation  
[Design - Design Development]



Veterans' Memorial Bridge,  
Plaza, & Tribute Garden  
[Close-out]



New Science, Engineering  
and Mathematics Building  
[Construction]



Pond Refurbishment  
[Close-out]

- ▶ IT Network Refresh (Throughout Campus) [Implementation]
- ▶ Mass Communications & Security Systems Upgrade - Security Cameras (Throughout Campus)



New Veterans' Resource Center &  
Student Activities Center Expansion  
[Close-out]

Athletic Field Realignment - Baseball  
Field Improvements  
[Close-Out]



# PROJECT STATUS REPORT – CYPRESS CAMPUS

## NEW SCIENCE, ENGINEERING, AND MATHEMATICS BUILDING

### CONSTRUCTION

<b>Address</b>	<b>9200 Valley View St. Cypress, CA 90630</b>
<b>Project Manager</b>	<b>Michael Zari Cypress College</b>
<b>Architect</b>	<b>LPA, Inc.</b>
<b>Construction Manager at Risk</b>	<b>Sundt Construction, Inc.</b>
<b>Project Gross Square Footage</b>	<b>106,023 GSF</b>
<b>DSA Application A#</b>	<b>04-117024</b>



### Project Overview

High priority project to increase the efficiency of the square footage and accommodation of services for Science, Engineering, and Mathematics programs with 21 lecture and 23 lab classrooms, an Immersive Digital Classroom (IDC), and an incinerator for the Mortuary Science Program.

### Budget & Construction Costs

- Total Project Budget (Est.) ..... \$101,159,163
  - New SEM Building..... \$94,322,272
  - New SEM FF&E ..... \$3,000,000
  - Infrastructure..... \$3,055,711
  - Mass Communication ..... \$389,367
  - Network Refresh..... \$645,883
- Funding Sources ..... Measure J & Campus
  - Measure J (Est.) ..... \$98,159,163
  - Campus Funds (Est. FF&E) ..... \$3,000,000
- Construction Cost..... \$81,634,384
- Construction Percent Completion .... 98.10%

### Schedule

- Design Start ..... Jun. 29, 2016
- Construction Start ..... Feb. 6, 2019
- Contractual Substantial Completion ... Feb. 15 2021
- Targeted Substantial Completion ..... May. 20 2021
- Targeted Construction Completion..... Aug. 2021
- Targeted Academic Occupancy..... Aug. 2021

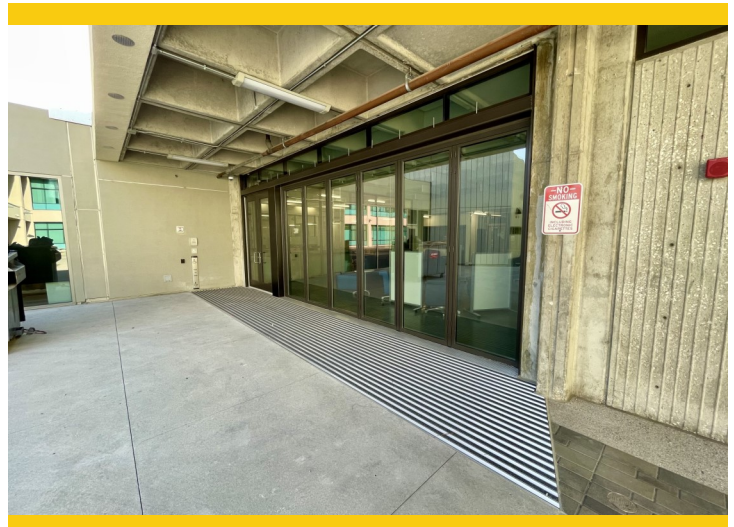
Allowances and Contingencies Status					
	In Contract	Approved	%	Balance	%
CM Allowance	\$1,031,360	\$772,163	74.9	\$259,197	25.1
District Allowance	\$1,858,120	\$1,728,209	93	\$129,911	7.0
CM Contingency	\$1,437,988	\$985,460	68.5	\$452,528	31.5



# PROJECT STATUS REPORT – CYPRESS CAMPUS

## NEW VETERANS’ RESOURCE CENTER & STUDENT ACTIVITIES CENTER EXPANSION CLOSE-OUT

<b>Address</b>	<b>9200 Valley View St. Cypress, CA 90630</b>
<b>Project Manager</b>	<b>Michael Zari Cypress College</b>
<b>Architect</b>	<b>LPA, Inc.</b>
<b>Construction Manager at Risk</b>	<b>Sundt Construction, Inc.</b>
<b>Project Gross Square Footage</b>	<b>12,119 GSF</b>
<b>DSA Application A#</b>	<b>04-117023</b>



### Project Overview

High priority project to increase the square footage and provide new accommodation of services for the Veterans’ Resource Center (VRC)/Student Activities Center (SAC) Expansion.

### Budget & Construction Costs

- Total Project Budget (Est.) ..... \$14,927,000
- VRC/SAC Building (Est.) ..... \$13,468,776
  - Measure J ..... \$13,411,167
  - Campus Funds ..... \$57,609
  - Infrastructure ..... \$1,144,756
  - Mass Communication ..... \$60,938
  - Network Refresh..... \$252,530
- Funding Sources..... Measure J & Campus
  - Measure J ..... \$14,869,391
  - Campus Funds ..... \$57,609
- Construction Cost..... \$10,247,473
- Construction Percent Completion .....99.64%

### Schedule

- Design Start ..... Dec. 9, 2016
- Construction Start ..... Feb. 6, 2019
- Contractual Substantial Completion ..... Aug. 2020
- Targeted Substantial Completion ..... Mar. 2 2021
- Targeted Construction Completion..... July. 2021
- Targeted Academic Occupancy..... July. 2021

Allowances and Contingencies Status					
	In Contract	Approved	%	Balance	%
CM Allowance	\$257,840	\$244,990	95.0	\$12,850	5.0
District Allowance	\$214,530	\$212,315	99.0	\$2,215	1.0
CM Contingency	\$168,797	\$155,053	91.9	\$13,744	8.1



# PROJECT STATUS REPORT – CYPRESS CAMPUS

## VETERANS’ MEMORIAL BRIDGE, PLAZA, & TRIBUTE GARDEN

### CLOSE-OUT

<b>Address</b>	<b>9200 Valley View St. Cypress, CA 90630</b>
<b>Project Manager</b>	<b>Michael Zari Cypress College</b>
<b>Architect</b>	<b>LPA, Inc.</b>
<b>Construction Manager at Risk</b>	<b>Sundt Construction, Inc.</b>
<b>Project Square Footage</b>	<b>63,192 GSF</b>
<b>DSA Application A#</b>	<b>04-117023</b>



### Project Overview

Construction of a Veterans’ Memorial Bridge (VMB), Tribute Garden, and site improvements to adjacent areas, including the Veterans’ Resource Center Plaza.

### Budget & Construction Costs

- Funding Sources ..... Measure J & Local
- Total Project Budget (Est.) ..... \$1,600,800
  - Measure J ..... \$100,800
  - Local ..... \$1,500,000
- Construction Cost ..... \$1,268,518
- Construction Percent Completion .... 99.13%

### Schedule

- Design Start ..... Dec. 9, 2016
- Construction Start ..... Feb. 6, 2019
- Contracted Substantial Completion ..... Aug. 2019
- Targeted Substantial Completion ..... Mar. 2 2021
- Targeted Construction Completion ..... Apr. 2021
- Targeted Occupancy ..... May. 2021

Allowances and Contingencies Status					
	In Contract	Approved	%	Balance	%
CM Contingency	\$19,538	\$18,805	96.2	\$733	3.8





# PROJECT STATUS REPORT — CYPRESS CAMPUS

## POND REFURBISHMENT

### CLOSE-OUT

<b>Address</b>	<b>9200 Valley View St. Cypress, CA 90630</b>
<b>Project Manager</b>	<b>Michael Zari Cypress College</b>
<b>Architect</b>	<b>LPA, Inc.</b>
<b>Construction Manager at Risk</b>	<b>Sundt Construction, Inc.</b>
<b>Project Square Footage</b>	<b>16,357 GSF</b>
<b>DSA Application A#</b>	<b>04-117023</b>



### Project Overview

Repairs and refurbishment of existing ponds. Replacement of pond lining and rearrangement of water features.

### Budget & Construction Costs

- Funding Sources ..... Local
- Total Project Budget (Est.) ..... \$682,017
  - Local ..... \$682,017
- Construction Cost..... \$628,808
- Construction Percent Completion .... 97.42%

### Schedule

- Design Start ..... Dec. 9, 2016
- Construction Start ..... Feb. 6, 2019
- Contracted Substantial Completion ..... Aug. 2019
- Targeted Substantial Completion ..... Mar. 2 2021
- Targeted Construction Completion..... Apr. 2021
- Targeted Occupancy ..... Apr. 2021

Allowances and Contingencies Status					
	In Contract	Approved	%	Balance	%
CM Contingency	\$9,379	\$8,736	93.1	\$643	6.9



# PROJECT STATUS REPORT – CYPRESS CAMPUS

## ATHLETIC FIELD REALIGNMENT - BASEBALL FIELD IMPROVEMENTS CLOSE-OUT

<b>Address</b>	<b>9200 Valley View St. Cypress, CA 90630</b>
<b>Project Manager</b>	<b>Phil Fleming Cypress College</b>
<b>Architect</b>	<b>Westberg+White, Inc.</b>
<b>General Contractor</b>	<b>JRH Construction Company, Inc</b>
<b>Project Square Footage</b>	<b>42,610 GSF</b>
<b>DSA Application A#</b>	<b>04-117630</b>



### Project Overview

The project encompasses the demolition of the existing baseball clubhouse, batting cages on the west side of the field, perimeter fencing along the south side and west side of the site and adjacent pedestrian pathways. The demolished facilities will be replaced by a modular building serving as the new baseball clubhouse, new pitching bullpen and batting cages, new site fencing with windscreen and padding, ADA-accessible parking stalls, and paths of travel along the west and south sides of the field.

### Budget & Construction Costs

- Funding Sources ..... Measure J & Local
- Total Project Budget (Est.) ..... \$2,103,981
  - Measure J..... \$1,932,981
  - Local..... \$171,000
- Construction Cost..... \$1,828,961
- Construction Percent Completion ..... 99.0%

### Schedule

- Design Start ..... Jul. 2018
- Construction Start ..... Jun. 2020
- Contracted Substantial Completion ..... Sep. 2020
- Substantial Completion ..... Dec. 2020
- Targeted Construction Completion..... Feb. 2021
- Targeted Occupancy ..... Mar. 2021

Allowances and Contingencies Status					
	In Contract	Approved	%	Balance	%
Allowance	\$180,000	\$109,000	60.6	\$71,000	39.4



# PROJECT STATUS REPORT – CYPRESS CAMPUS

## FINE ARTS BUILDING RENOVATION DESIGN— DESIGN DEVELOPMENT

<b>Address</b>	<b>9200 Valley View St. Cypress, CA 90630</b>
<b>Project Manager</b>	<b>Michael Zari Cypress College</b>
<b>Architect</b>	<b>DLR Group</b>
<b>Project Delivery Method</b>	<b>CM Multi-Prime</b>



### Project Overview

The project involves the renovation of the existing 36,804 ASF in the Fine Arts Building #2. Currently, related instructional programs are dispersed throughout the Campus. Renovations will encompass functional and adequate recording arts, rehearsal and performance spaces for music instruction, spaces for student study near departmental faculty and other resources, and the reuse of existing vacant spaces currently not configured for instruction. Noise intrusion between spaces will be mitigated to minimize disruptions to instruction and music practice, and new instructional technology will be installed to support current instructional methodologies and pedagogies. The scope also replaces the existing mechanical, electrical, and plumbing systems and allocates sufficient square footages for code compliant bathrooms.

- Preliminary Total Project Budget..... \$51,546,861
- Funding Source ..... Measure J & State Capital Outlay
  - Measure J ..... \$33,413,861
  - State Capital Outlay Funds ..... \$18,133,000
- Project Gross Square Footage..... 66,765 GSF
- Estimated Construction Start..... Fall 2022
- Targeted Completion ..... Winter 2023/24



# PROJECT STATUS REPORT – CYPRESS CAMPUS

## UPDATE/IMPROVE INFRASTRUCTURE

### VARIOUS STAGES

<b>Address</b>	<b>9200 Valley View St. Cypress, CA 90630</b>	<b>Total Project Budget</b>	<b>\$24,426,665 (Measure J)</b>
		<b>Total Budget Allocated</b>	<b>\$16,308,259 (Measure J)</b>
<b>Number of Projects</b>	<b>8</b>	<b>Funding Source</b>	<b>Measure J &amp; Capital Outlay</b>

### General Overview

Projects to address infrastructure improvements or upgrades throughout the Campus. Funds are allocated to projects as needs are identified. For infrastructure projects related to the New SEM and VRC/SAC, please refer to pages 3 and 4 of this report.

### IT Network Refresh Project Overview

#### IMPLEMENTATION

Assessment of Campus data network infrastructure to identify necessary upgrades and changes that will enable supporting future Campus needs; specifically addressing wired, wireless, voice, and video networks. The scope includes replacing network core switches, providing a more responsive support structure, preparing for cloud computing, and adaptation of voice over IP systems across the District. For costs related to the New SEM and VRC/SAC, please refer to pages 3 and 4 of this report.

- Project Budget..... \$9,358,073
  - Current Implementation (Measure J) ..... \$1,972,462
  - Current Implementation (Capital Outlay)..... \$4,256,486
  - Upcoming Phases (Measure J) ..... \$3,129,125
- Funding Source ..... Measure J & Capital Outlay Funds
- Project Delivery Method..... California Multiple Award Schedule (CMAS)
- Design Implementation..... VectorUSA
- Architect..... Shandam Consulting
- Project Management ..... District IS / PlanNet Consulting
- Design Implementation Start..... November 2019
- Targeted Completion ..... December 2021



# PROJECT STATUS REPORT — CYPRESS CAMPUS

## MASS COMMUNICATION & SECURITY SYSTEMS UPGRADE

### VARIOUS STAGES

<b>Address</b>	<b>9200 Valley View St. Cypress, CA 90630</b>	<b>Total Project Budget</b>	<b>\$2,589,830</b>
		<b>Total Budget Allocated</b>	<b>\$646,975</b>
<b>Number of Projects</b>	<b>4</b>	<b>Funding Source</b>	<b>Measure J</b>

### General Overview

Projects to address fire alarm, mass communication, security, access control, and lockdown systems throughout the Campus. Funds are allocated to projects as needs are identified. Two projects have been completed to date related to door replacements and safety film installation. Please refer to pages 52 for additional details on completed projects. For mass communication & security systems projects related to the New SEM and VRC/SAC, please refer to pages 3 and 4 of this report.



# PROJECT STATUS REPORT — CYPRESS CAMPUS

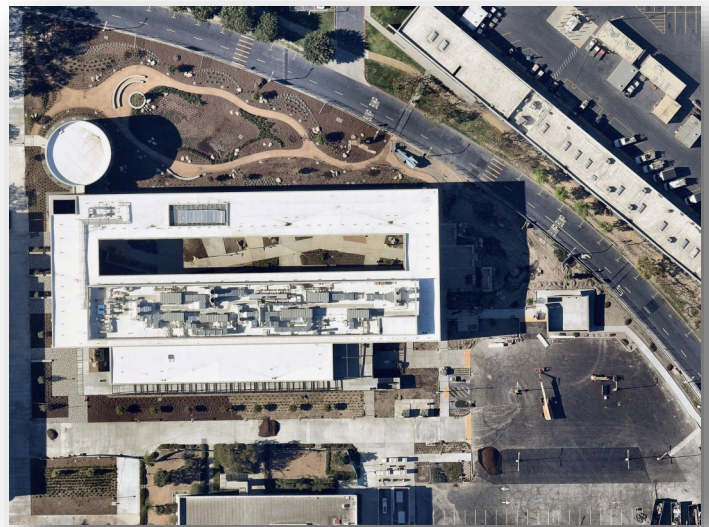
## UPDATES ON CAMPUS PROJECTS - CYPRESS COLLEGE

### Campus

- Construction work proceeds at the site during the current COVID-19 prevention guideline directives from the State's Governor. Sundt is following recommendations from the Centers for Disease Control (CDC) on social distancing and hygiene practices for all its employees and subcontractors. Daily temperature checks have been implemented for all employees on site.

### New Science, Engineering, and Mathematics Building

- In March, construction progress reached the 90 percent completion mark. Starting with landscaping, installation was underway throughout the perimeter of the structure. Installation of paths of travel completed on the north side of the building enabling pedestrians to enjoy the open space. Trees and shrubs were placed around the new bioswales that will control the flow of stormwater and percolation of water into the water table. On the southside of the building, lighting was placed along the newly completed fire lanes and landscaping is in place in the space between the fire lanes and the new building. Soil at the eastside parking lot has been fully compacted and paved in compliance with ADA disability specifications. Concrete for sidewalks, curbs and gutters have been poured and cured. Striping will be underway in the upcoming months for ADA accessible parking stalls, and college related parking at the space. Balcony and stair railing had been fully installed and painted along the south elevation of the building and the interior of the courtyard. Pavers were also fully installed at the west entrance of the building between the Old SEM and the new structure. The installation of the dome ceiling at the IDC was nearing completion. Drywall work has been completed and painting was underway.



New SEM Aerial Construction Progress —April 2021

- Work on the first and second floors was completed with procurement underway related to furniture, fixtures and equipment for all floors of the building. The third-floor neared completion. Furniture was delivered and installed starting in May 2021. Finishes in the interior of the building were completed by April 20th. Installation of T-bar ceiling grids, light fixtures, tiles, and flooring has concluded on the first and second levels of both the north and south wings of the structure. Work proceeded on casework and



# PROJECT STATUS REPORT — CYPRESS CAMPUS

## UPDATES ON CAMPUS PROJECTS - CYPRESS COLLEGE (Continued)



New SEM Construction Progress —April 2021

countertop placement on the third floor of the building in May. Planning is underway for the move-in of faculty and staff at the end of September 2021. The projection ceiling and associated acoustic equipment were installed at the Immersive Digital Classroom or IDC with work reaching completion in April. Work will proceed in the placement of permanent flooring and stadium seating.

- Work was completed on the trellises and handrailing of the structure in April. Inspections were underway for the compliance with slopes with ADA code requirements. Work was also underway on the ADA accessible parking stalls at the parking lot adjacent to the building. Room

signage was installed. Painting and installation of handrails throughout the building neared completion. Fire alarm testing was underway for the first and second floor. The IDC painting had been completed and installation for the dome ceiling is also completed. Theater seating installation was underway. This month the vast majority of the work has been completed in the north wing. Dry erase boards were installed in classrooms, clocks and accessories have been installed as well as finishes in the buildings. Installation of audiovisuals were underway. In the south wing of the building, laboratory case work continued for the third level of the building. Countertops were being delivered to the site for installation. Installation of theater seating was completed in the IDC as well.

- The projected substantial completion of April 20,2021 was not met. This is the result of difficulties completing testing and commissioning in the building as a result of challenges with the chilled water pressure and supply for the campus central plant. The project team is working on the resolution to the issue and anticipate that a substantial completion date is anticipated to be reached by May 21, 2021. And, a final project completion will occur in later June 2021.
- All Parking Lot 7 ADA-accessible stalls were completed. Lighting throughout the lot has been installed and is under testing. The dismantling of all temporary structures and cleanup of the construction staging area in progress in preparation for substantial completion .
- Building signage was installed in late April on the eastern and western facades of the structure. All landscaping and site lighting is in place on the building's central courtyard. Landscaping is finishing up at



# PROJECT STATUS REPORT — CYPRESS CAMPUS

## UPDATES ON CAMPUS PROJECTS - CYPRESS COLLEGE (Continued)

the eastern side of the building with the compaction and soil preparation of the las remaining bioswale to be installed. The installation of security cameras and other building security elements is underway throughout the building.

- Commissioning agent tk1sc noted in mid-April that upon completion of the first inspection for lighting controls, testing for functionality is 50% complete. Additional testing will be completed in May and June upon resolution of current issues.

### **New Veterans' Resource Center & Students Activities Center Expansion**

- The project reached substantial completion on March 2nd, 2021 marking the successful completion of the vast majority of the scope of work contracted with Sundt Construction, Inc. and designed by LPA. Work was in progress on outstanding punch-list items. The move-in of building user group equipment and belongings to the VRC and SAC spaces started at the end of March.



VRC Exterior Courtyard Construction Progress —April 2021

- Punch-list work continued in April and May. Revisions to the fencing for the VRC courtyard and changes to the signage for the exterior building of the SAC were underway. Repair work relating to water damage due to the late December 2020 rain event concluded in mid-April. The quartz wall at the reception desk for the VRC was fully installed in April. Signage for the room names and room assignments had been installed and completed. By the end of May, all punch-list items are anticipated to be fully addressed and the Building User Group (BUG) to complete the moving process.

### **Veterans' Memorial Bridge, Plaza, and Tribute Garden**

- The project reached substantial completion on March 2nd, 2021 marking the successful completion of the vast majority of the scope of work contracted with Sundt Construction, Inc. and designed by LPA. Work remained in progress on outstanding punch-list items. Fundraising efforts continues for the





# PROJECT STATUS REPORT – CYPRESS CAMPUS

## UPDATES ON CAMPUS PROJECTS - CYPRESS COLLEGE (Continued)

Veterans' Memorial Bridge and Tribute Garden with the sale of commemorative brick pavers to be inscribed and placed in front of the VRC/SAC.

- Additional scope of work was identified to establish a path of travel for pedestrians to access the northeast side of the Tribute Garden. In late April, work concluded on the additional path of travel that allows for the ease of flow of pedestrians into the space.

### **Pond Refurbishment**

- The project reached substantial completion on March 2nd, 2021 marking the successful completion of the vast majority of the scope of work contracted with Sundt Construction, Inc. and designed by LPA. Punch-list items are being addressed.



VRC/SAC, Bridge, Plaza, and Tribute Garden Aerial View—April 2021

### **Athletic Field Realignment - Baseball Field Improvements**

- No Updates for this project this reporting period. The project is in financial and DSA close-out.

### **Fine Arts Building Renovation**

- In late February, the California Community Colleges Chancellor's Office (CCCCO) approved the submitted drawings and specifications for Preliminary Plans. The approval allows for the design team to proceed with the second phase of Working Drawings anticipated to conclude in late August 2021 for submittal to CCCCCO and DSA.
- By March, estimates for the scope of work at the preliminary plans stage of design indicated that the project will exceed the fifty percent cost for replacement threshold that necessitates extensive seismic rehabilitation of the existing structure. DLR worked on potential impacts to the plans and cost ramifications of these potential seismic retrofits.
- Sundt Construction was selected as the construction manager to provide phase I pre-construction services.



## UPDATES ON CAMPUS PROJECTS - CYPRESS COLLEGE (Continued)

- In late April, the project team prepared a geotechnical study for the review of the California Geological Service (CGS) and approval in order to fulfill requirements established by DSA as a result of the location of the building near seismic faults. And, the project design team together with the Campus project team worked towards the completion of the construction documents to be submitted to the CCCCCO by the beginning of the third quarter of 2021. Also, work continued for the determination to the scope of work related to the seismic rehabilitation of the building to be able to meet the requirements established by DSA. A meeting was set up with the local DSA office in San Diego for the assessment of these rehabilitation measures.

### **Update / Improve Infrastructure**

#### **IT Network Refresh Project**

- The new phone system installation will be taking place in summer 2021

### **Mass Communication & Security Systems Upgrade**

#### **Security Cameras**

- No updates for this project this reporting period.



# AERIAL VIEW — FULLERTON CAMPUS PROJECTS



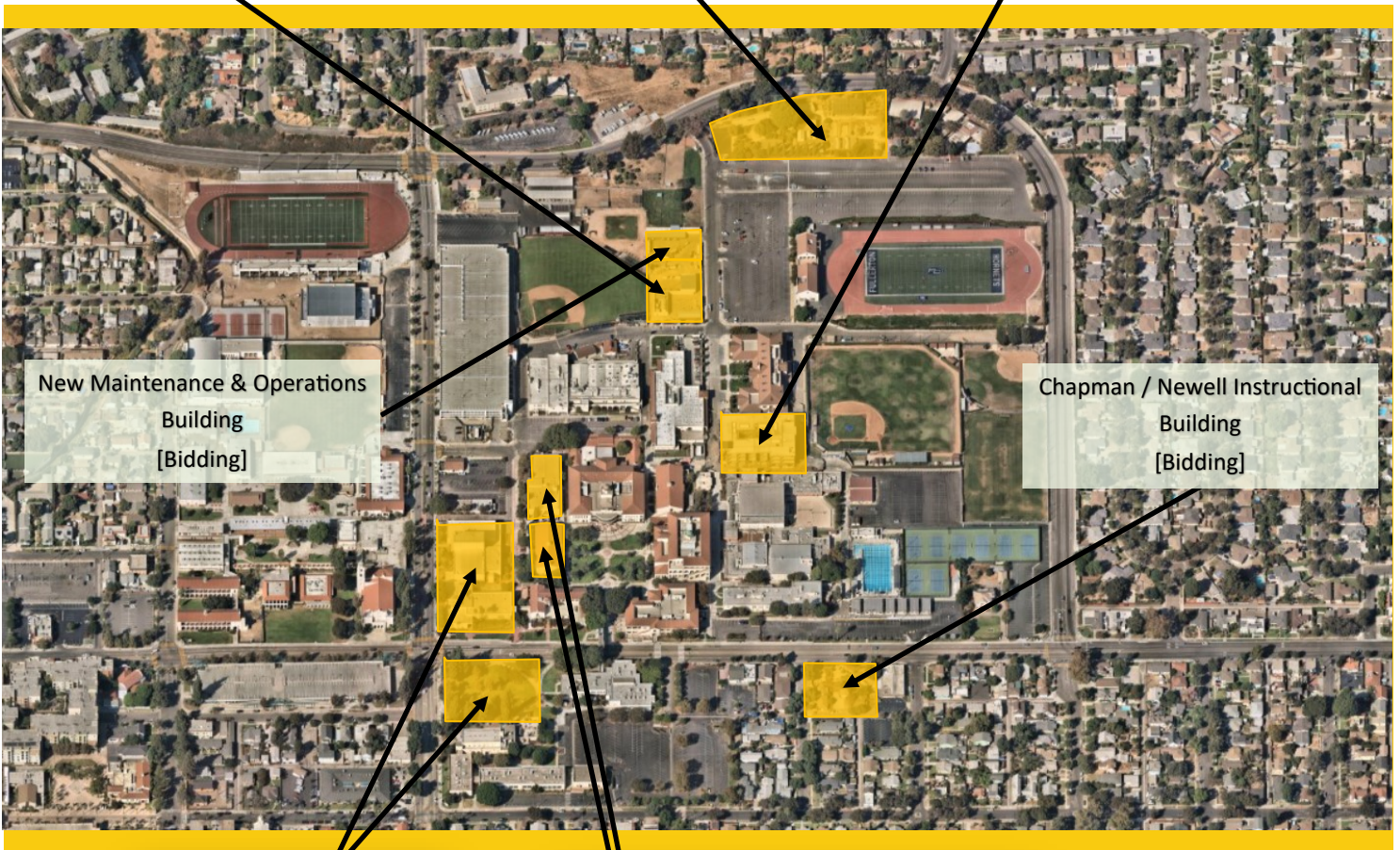
Central Plant Replacement and Expansion  
[Construction]



Greenhouse Replacement  
[Close-out]

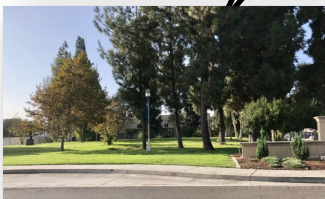


New Instructional Building  
[Construction]



New Maintenance & Operations Building  
[Bidding]

Chapman / Newell Instructional Building  
[Bidding]



New Performing Arts Complex - Demolish Buildings 1100 and 1300  
[Design—Schematic Design]



Renovate Buildings 300 & 500  
[Bidding]

► IT Network Refresh (Throughout Campus)  
[Implementation]



# PROJECT STATUS REPORT — FULLERTON CAMPUS

## GREENHOUSE REPLACEMENT CLOSE-OUT

<b>Address</b>	<b>321 E. Chapman Ave. Fullerton, CA 92832</b>
<b>Project Manager</b>	<b>Larry Lara Fullerton College</b>
<b>Architect</b>	<b>Westberg + White</b>
<b>General Contractor</b>	<b>RT Contractor</b>
<b>Project Delivery Method</b>	<b>Design-Bid-Build</b>
<b>Project Gross Square Footage</b>	<b>3,853 GSF</b>



### Project Overview

Replacement of the existing 1,440 square-foot greenhouse with a new 2,880-square-foot Venlo-style greenhouse, renovations to the existing restroom facilities, and upgrading pathway accessibility to meet current ADA code requirements, and striped parking spaces within the Horticulture Complex 1600.

### Budget & Construction Costs

- Funding Source ..... Measure J & Local
- Total Project Budget ..... \$1,652,105
  - Measure J (Est.) ..... \$834,381
  - Local (Strong Workforce Dev.) ..... \$817,724
- Construction Cost..... \$1,293,000
- Construction Percent Completion .....99.5%

### Schedule

- Design Start ..... Dec. 2019
- Construction Start ..... Jul. 2020
- Contracted Substantial Completion ..... Sep. 2020
- Targeted Substantial Completion ..... Apr. 2021
- Targeted Occupancy. .... Mar. 2021

Allowances and Contingencies Status					
	In Contract	Approved	%	Balance	%
Allowance	\$50,000	\$22,200	44.4	\$27,800	55.6



# PROJECT STATUS REPORT – FULLERTON CAMPUS

## NEW INSTRUCTIONAL BUILDING CONSTRUCTION

<b>Address</b>	321 E. Chapman Ave. Fullerton, CA 92832
<b>Project Manager</b>	Oscar Saghie Fullerton College
<b>Design-Builder</b>	BN Builders, Inc. & Roesling Nakamura Terada Architects, Inc.
<b>Project Delivery Method</b>	Progressive Design-Build
<b>Project Gross Square Footage</b>	74,927 GSF
<b>DSA Application A#</b>	04-118108



### Project Overview

The New Instructional Building (New IB) will help meet Campus growth needs with the goal of consolidating an instructional division into a single building. The building will accommodate more than 40 classrooms and the division office services including staff offices. Scope of work for this project includes the expansion of the Central Plant.

### Budget & Construction Costs

- Funding Source ..... Measure J
- Total Project Budget (Est.) ..... \$53,867,013
  - New Instructional Building ..... \$53,588,031
  - Network Refresh..... \$278,982
- Construction Cost..... \$35,985,926
- Construction Percent Completion .....77.4%

### Schedule

- Design Start .....Jun. 18, 2018
- Construction Start ..... Feb. 12, 2020
- Contracted Substantial Completion.....Aug. 2021
- Targeted Substantial Completion ..... Sep. 2021
- Targeted Occupancy. .... Oct. 2021

#### Allowances and Contingencies Status

	In Contract	Approved	%	Balance	%
Construction Contingency	\$1,082,149	\$727,222	67.2	\$354,927	32.8
Allowance	\$1,782,043	\$769,165	43.2	\$1,012,878	56.8



# PROJECT STATUS REPORT — FULLERTON CAMPUS

## CENTRAL PLANT REPLACEMENT & EXPANSION CONSTRUCTION

<b>Address</b>	321 E. Chapman Ave. Fullerton, CA 92832
<b>Project Manager</b>	Oscar Saghie Fullerton College
<b>Design-Builder</b>	BN Builders, Inc. & Roesling Nakamura Terada Architects, Inc.
<b>Project Delivery Method</b>	Progressive Design-Build
<b>Project Gross Square Footage</b>	2,028 GSF
<b>DSA Application A#</b>	04-118525



### Project Overview

Replacement and expansion of the central plant to accommodate planned new facilities and renovations and improve efficiency in servicing existing buildings. Project includes the replacement and expansion of the existing central plant to accommodate for three 600-ton high-efficiency water chillers and cooling towers.

### Budget & Construction Costs

- Funding Source.....Measure J
- Total Project Budget.....\$10,600,000  
Measure J (Est.).....\$10,600,000
- Construction Cost.....\$6,649,366
- Construction Percent Completion..... 85.2%

### Schedule

- Design Start ..... Jun. 18, 2018
- Construction Start ..... Feb. 12, 2020
- Contracted Substantial Completion ..... Jun. 2021
- Targeted Substantial Completion.....Aug. 2021
- Targeted Occupancy.....Aug. 2021

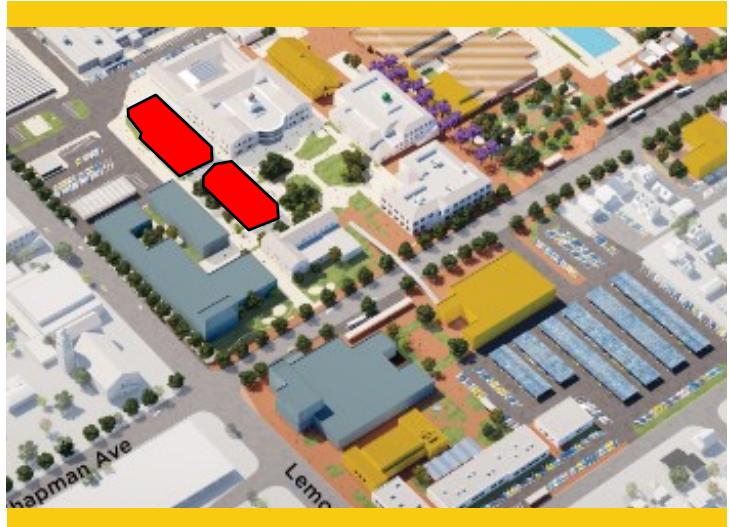
Allowances and Contingencies Status					
	In Contract	Approved	%	Balance	%
Construction Contingency	\$195,037	\$151,693	77.8	\$43,344	22.2
Allowance	\$87,500	\$35,392	40.4	\$52,108	59.6



# PROJECT STATUS REPORT – FULLERTON CAMPUS

## RENOVATE BUILDINGS 300 & 500 BIDDING

<b>Address</b>	<b>321 E. Chapman Ave. Fullerton, CA 92832</b>
<b>Project Manager</b>	<b>Oscar Saghieh Fullerton College</b>
<b>Architect</b>	<b>R2A Architecture</b>
<b>General Contractor</b>	<b>TBD</b>
<b>Project Delivery Method</b>	<b>Design-Bid-Build</b>
<b>DSA Application A#</b>	<b>04-118314</b>



### Project Overview

Total renovation of Buildings 300 and 500, including historic consideration of Building 300. The renovated buildings will contain general classrooms, Computer Information Systems (CIS) laboratories, Academic Computing Technologies (ACT) laboratories, photography laboratories, dean and faculty offices, shared laboratories, and a lecture hall.

- Total Project Budget .....\$35,830,000
- Funding Source .....Measure J & State Capital Outlay
  - Measure J .....\$20,482,000
  - State Capital Outlay Funds .....\$15,348,000
- Project Gross Square Footage.....55,451 GSF
- Estimated Construction Start.....January 2022
- Targeted Completion .....September 2023



# PROJECT STATUS REPORT — FULLERTON CAMPUS

## NEW MAINTENANCE & OPERATION BUILDING BIDDING

<b>Address</b>	<b>321 E. Chapman Ave. Fullerton, CA 92832</b>
<b>Project Manager</b>	<b>Oscar Saghieh Fullerton College</b>
<b>Architect</b>	<b>TBD</b>
<b>Project Delivery Method</b>	<b>Design-Build</b>



### Project Overview

The New Maintenance and Operations Building will centralize all M & O services into a single building located on the Main Campus. The building will include trade-specific workshops for maintenance, grounds, facilities, and custodial personnel while improving response time and efficiencies by locating the building on the Main Campus adjacent to the central plant. Project is anticipated to be bundled for bidding with the Chapman / Newell Instructional Building.

- Total Project Budget .....\$14,758,944
- Funding Source .....Measure J & Local Funds
  - Measure J .....\$6,758,944
  - Local Funds.....\$8,000,000
- Project Gross Square Footage.....22,300 GSF
- Estimated Construction Start.....Winter 2022
- Targeted Completion .....Winter 2023





# PROJECT STATUS REPORT — FULLERTON CAMPUS

## CHAPMAN / NEWELL INSTRUCTIONAL BUILDING BIDDING

<b>Address</b>	<b>321 E. Chapman Ave. Fullerton, CA 92832</b>
<b>Project Manager</b>	<b>Oscar Saghieh Fullerton College</b>
<b>Architect</b>	<b>TBD</b>
<b>Project Delivery Method</b>	<b>Design-Build</b>



### Project Overview

- The building at the intersections of Chapman Avenue and Newell Street will potentially provide improved facilities to Student Resources, CalWORKs, Health Services, the Veterans' Resource Center (VRC), and Instructional Programs. Project is anticipated to be bundled for bidding with the New M&O Building.
- Total Project Budget .....\$21,985,777
- Funding Source .....Measure J & Local Funds
  - Measure J .....\$21,985,777
- Project Gross Square Footage.....30,000 GSF
- Estimated Construction Start.....Winter 2022
- Targeted Completion .....Winter 2023



# PROJECT STATUS REPORT — FULLERTON CAMPUS

## NEW PERFORMING ARTS COMPLEX - DEMOLISH BUILDINGS 1100 AND 1300

### DESIGN—SCHEMATIC DESIGN

<b>Address</b>	<b>321 E. Chapman Ave. Fullerton, CA 92832</b>
<b>Project Manager</b>	<b>Oscar Saghie Fullerton College</b>
<b>Architect</b>	<b>Pfeiffer Partners Architects, Inc.</b>
<b>Project Delivery Method</b>	<b>Design-Bid-Build</b>



### Project Overview

This project addresses the demand for the enrollments in the performing arts programs by constructing a new complex bringing music, drama, theater arts, and communication programs together into a single facility. The new building replaces outdated facilities with electrical deficiencies and outmoded configurations. The new structure will take advantage of the potential use of commonly required spaces to improve overall utilization and flexible spaces that help programs in meeting higher demands anticipated in the near future.

- Preliminary Total Project Budget..... \$72,273,153
- Funding Source ..... Measure J & State Capital Outlay
  - Measure J ..... \$30,724,153
  - State Capital Outlay Funds ..... \$41,549,000
- Project Gross Square Footage..... 66,765 GSF
- Estimated Construction Start..... Summer 2023
- Targeted Completion ..... Summer 2025



# PROJECT STATUS REPORT — FULLERTON CAMPUS

## UPDATE/IMPROVE INFRASTRUCTURE

### VARIOUS STAGES

<b>Address</b>	<b>321 E. Chapman Ave. Fullerton, CA 92832</b>	<b>Total Project Budget</b>	<b>\$31,607,054 (Measure J)</b>
		<b>Total Budget Allocated</b>	<b>\$8,444,702 (Measure J)</b>
<b>Number of Projects</b>	<b>3</b>	<b>Funding Source</b>	<b>Measure J &amp; Capital Outlay</b>

### General Overview

Projects to address infrastructure improvements or upgrades throughout the Campus. Funds are allocated to projects as needs are identified.

### IT Network Refresh Project Overview

#### IMPLEMENTATION

Assessment of Campus data network infrastructure to identify necessary upgrades, and changes that will enable supporting future Campus needs; specifically addressing wired, wireless, voice, and video networks. The scope includes replacing network core switches, providing a more responsive support structure, preparing for cloud computing, and adaptation of voice over IP systems across the District. For costs related to the New Instructional Building please refer to page 18 of this report.

- Project Budget..... \$13,021,817
  - Current Implementation (Measure J) ..... \$3,132,039
  - Current Implementation (Capital Outlay)..... \$5,300,799
  - Upcoming Phases (Measure J) ..... \$4,588,979
- Funding Source ..... Measure J & Capital Outlay Funds
- Project Delivery Method ..... California Multiple Award Schedule (CMAS)
- Design Implementation..... VectorUSA
- Architect..... Shandam Consulting
- Project Management ..... District IS / PlanNet Consulting
- Design Implementation Start..... November 2019
- Targeted Completion ..... December 2021



# PROJECT STATUS REPORT — FULLERTON CAMPUS

## UPDATES ON CAMPUS PROJECTS - FULLERTON COLLEGE

### Campus

- Construction work at active project sites proceeds during the current COVID-19 protection guideline directives from the State's Governor. BN Builders is following recommendations from the Centers for Disease Control (CDC) on social distancing and hygiene practices for all its employees and subcontractors. As mitigation measures to prevent COVID-19 outbreaks, temperature checks are being performed before personnel are walking on-site and stretch and flex. Work is being segmented in areas where personnel are asked to remain during a day's work to complete their tasks. Visitors are provided a wristband as a visible check that they have provided contact details before accessing the site or meetings related to the project.

### Greenhouse Replacement



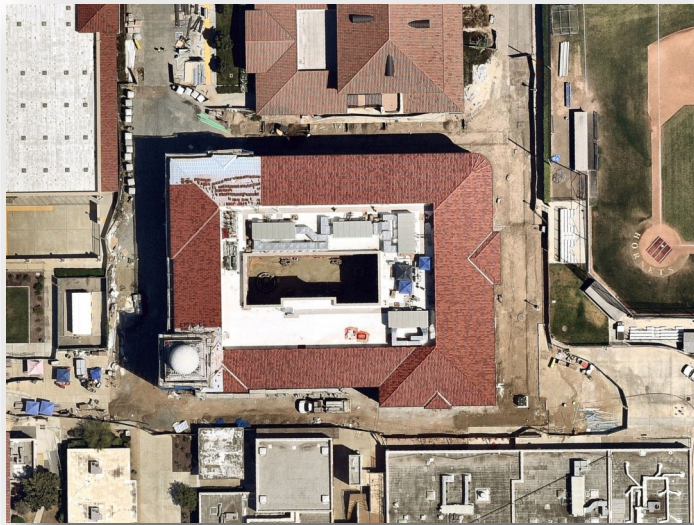
Greenhouse Replacement Construction Progress — April 2021

- In late February, the installation of irrigation and growing tables occurred in the interior of the structure. Work was substantially completed by the end of March. Inspections to access compliance have been conducted and resulted in several changes to be addressed by the general contractor. Several proposed change orders have been drafted by the general contractors and are being reviewed and validated by Campus Facilities.
- Added scope of work as a result of storm water drainage deficiencies to the ADA path of travel from the parking area to the new greenhouse facilities were addressed using allowance funds in March. Excess costs were presented as a change order of roughly \$45,000 to the Board of Trustees in April.
- All major construction activity has been completed for this project. Equipment is being tested for functionality in accordance to the building construction specifications. Allowance Authorization No. 5 has been completed. The scope of work relates to extended stairs and walkways improvements to drainage along the path of travel connecting the new greenhouse to the existing parking lot on the west end of the complex.



## UPDATES ON CAMPUS PROJECTS - FULLERTON COLLEGE (Continued)

- Change Order No. 1 was fully executed for the additional scope of work related to changes in the path at the entrance to the horticulture complex and parking lots. And it provides for improvements at the slab and downspouts for drainage around the new greenhouse building. The cost for this change order is \$41,627. And it brings up the construction contract amount to \$1,334,627. The anticipated project completion was revised to April 16, 2021 from March 2, 2021.



New Instructional Building Aerial Construction Progress —February 2021

- Punch-list work was fully completed by the first week of May 2021. This project entered the close-out phase.

### **New Instructional Building**

- Paper and lath installation started in late February and continued into March. Work along the north and west elevations of the building was nearly completed with work proceeding on the east and south sides of the structure. Following it was the application of the first coat of plaster at the end of February. All three coats inclusive of integral building coloring were cured by early April. Meanwhile, the interior courtyard provides a glimpse of the finished product with the completion of plaster activities and curing of surfaces.
- Drywall taping neared completion on the second level, with painting starting at the beginning of March. Data infrastructure installation was under way at this level, following completion of MEP installation and testing. Painting was in progress on the first floor followed by the installation of T-bar for recessed finished ceilings at the office, conference, and classroom spaces in addition to cabling for data and AV equipment. Carpeting started on the first floor in mid-March following concrete moisture testing earlier in the month. Tiling placement was underway at bathrooms at this level as well and soon progressing to the second floor.
- HVAC equipment was installed on the roof level. Crews worked to secure the equipment. The HVAC is comprised of four air handling units and ducts that distribute cooled or heated air throughout the building.

# PROJECT STATUS REPORT — FULLERTON CAMPUS

## UPDATES ON CAMPUS PROJECTS -

- The board stamping of plaster in the courtyard started early in March. Scaffolding was dismantled in this space in mid-March upon completion and was followed by window testing for water-tightness. The installation of the plaster lath was in progress on the south side of the building. The framing of exterior walls on stairwells progressed although there were slight delays in materials delivery due to COVID-19 supply chain disruptions.
- Courtyard scaffolding was dismantled. Scratch brown and finished coat with integral coloring was applied to all exterior surfaces in the courtyard. Testing for windows and water tightness occurred during this period. Site work began in April encompassing soil leveling and compaction in preparation for landscaping around the building. Scaffolding was dismantled on the west side of the building upon completion of the plaster application on the surface. Activities related to the plaster application was completed by the end of April. Framing occurred at the tower and finished by the end of March. Copper gutters have been installed around the building and downspout work commenced after that. The installation of decorative tiling occurred during this period on the western façade of the building.
- Moving to the inside of the building on the first level, tile installation is completed at the bathrooms. T-bar installation is completed on the first floor. Subcontractors were in progress of installing receptacles and data jacks and case work that finished in early April. Moving to the second-floor, lighting fixtures were installed and HVAC registers also completed at this level. T-bar was completed at this level. On the third level dry wall has been completed. Taping and painting were underway and T-bar installation started in late March and ended in late April. Tilework was in progress in the second and third levels of this building at the end of April.
- The interior painting in the second level was completed by early March, while tiling and floor concrete floating in restrooms commenced. Other activities underway at this level are the installation of the T-bar grid for dripped ceilings, as well as fire alarm cabling placement. On the first level of the building,



New Instructional Building Construction Progress —April 2021



# PROJECT STATUS REPORT — FULLERTON CAMPUS

## UPDATES ON CAMPUS PROJECTS - FULLERTON COLLEGE (Continued)

projector supports and light fixture installation in the T-bar grid are underway alongside exhaust and supply registers for the structure's HVAC system. Work concluded on the installation of one of the two elevators in the structure.

- Furniture, fixtures and equipment delivery is anticipated in late May. At that point, all equipment for the building classrooms, faculty offices and other spaces will be delivered and installed on site.
- By late March - Clay tiles installation at the roof level neared the fifty percent mark. Installation continued into early May 2021.



New Instructional Building Construction Progress —April 2021

The structure for the dome has been lifted and welded in place upon the main feature tower of the building. Scaffolding has been installed around the dome for the application of waterproofing and installation of tile design on the dome. It is anticipated that this scope of work will be completed by the end of the second quarter of 2021. Coordination is underway with VectorUSA for the installation for wireless access points. This scope of work is the second part to the change order no. 1 for additional wireless access point coverages throughout the building.

- Scaffolding was dismantled on the vast majority of the south elevation of the building following the application of the final coat of plaster to the elevation. Grading and compaction of soil commenced along this area on the first week of May. Temporary structures remain in areas adjacent to the tower stairwell. Concrete pours took place early May at the central courtyard for bench seating, retaining walls, and other hardscaping.
- The ceiling grid has been fully installed on the third level of the structure, while doors and projectors were successfully placed on the second floor. On the first level, all chair railing is being installed in all classrooms and meeting spaces starting on the first week of May into June as other finished are completed. The second elevator cabin assembly was favorably completed in the last week of April. Instruction and certification are pending from the corresponding State agency.



# PROJECT STATUS REPORT — FULLERTON CAMPUS

## UPDATES ON CAMPUS PROJECTS - FULLERTON COLLEGE (Continued)

### Central Plant Replacement & Expansion

- In the exterior, soil grading was completed around the perimeter of the structure following the completion of storm drains installation. Concrete curbs and gutters were poured at the end of February and into early March.
- In early March, fire alarm conduits were installed throughout the building. Cabling was pulled along these conduits by late March. On the exterior sidewalks and curbs were poured on the perimeter of the building. Similarly, the base for the parking lot asphalt was laid in mid-March and targeted to be fully paved by the end of the month.
- Connections for piping and HVAC equipment between the exterior enclosed yard and equipment interior of the building are in place. Permanent power was established on April 2nd following a Campus shutdown of power to be able to establish a connection. The exterior sidewalk is completed. All sidewalks have been poured and cured and asphalt has been laid on the parking areas adjacent to the new structure. Light fixtures are being installed on the outside of the new building. All scaffolding has been fully removed.
- The fire alarm for the central plant was tested with completion in the middle of April. Additional piping supports have been added by the structural subcontractor. Commissioning activities occurred between late April and early May for the commission of all function and all equipment in the Central Plant. All work is anticipated to be completed by June.
- Graphics for the Building Automation System (BAS) for the new central utility plant are under development as of late April. Draft diagrams have been submitted to the Campus team for initial review and feedback to the design team.
- Pressure testing in piping throughout the system is completed. Pump alignment and testing is also completed. And the set up for controlling systems for the Central Plant, chillers and towers, is in place. Building commissioning is underway.



Central Plant Construction Progress —April 2021





# PROJECT STATUS REPORT — FULLERTON CAMPUS

## UPDATES ON CAMPUS PROJECTS - FULLERTON COLLEGE (Continued)

### **Renovate Buildings 300 & 500**

- CRB Architects are working in conjunction with the Campus project team to determine pathways to include additional savings on the project drawings in preparation for rebidding in the second quarter of 2021. The design team is preparing changes to the project specification of requirements in order to decrease the scope of work and in that way to reduce the bid cost of the project.
- Upon completion of the scope changes by the design team the project will be submitted to DSA for additional review. This process will take 4-6 weeks to complete and at that point, the information will be available for potential bidders to access and review in order to provide a complete figure of how much the project will cost for construction.
- As of early April, CRB Architects revised construction documents for the 300/500 building renovation. The revised documents incorporate what is previously included as deductive alternates. All of them are being included in the construction documents. The revised documents were sent to DSA for review and approval. Bidding preparations will take place for release of the documents in the third quarter of 2021. The anticipated construction date remains January 2023.

### **New Maintenance & Operations Building**

- A request for qualifications and proposals (RFQ/RFP) was released on April 26th, 2021 for a progressive design-build team concerning the design and construction of the Chapman-Newell Instructional and New M&O Buildings. A mandatory virtual pre-submittal conference was held on May 5th, 2021. Proposals will be due to the District on June 1st, 2021.

### **Chapman / Newell Instructional Building**

- Programing documents were finalized and released for bid in search of a design-build team for the design and construction of this facility. It is anticipated that a team will be selected by the end of the second quarter 2021.
- A request for qualifications and proposals (RFQ/RFP) was released on April 26th, 2021 for a progressive design-build team concerning the design and construction of the Chapman-Newell Instructional and New M&O Buildings. A mandatory virtual pre-submittal conference was held on May 5th, 2021. Proposals will be due to the District on June 1st, 2021.

### **New Performing Arts Complex**

- Design sessions continue with the building user group (BUG). The team has started evaluating flooring layouts based on used adjacencies and proximities for building functionality.



## UPDATES ON CAMPUS PROJECTS - FULLERTON COLLEGE (Continued)

- By mid-April, schematic design progressed into design development for the new building to house performing arts programs for the College. BUG is evaluating different options presented by the Architect of Record, Pfeiffer. They are developing different layouts for the arrangement of the facilities in potentially 3 levels.
- Work will continue with the initial phases of design development into July 2021 for the completion of the preliminary plans and submittal to the California Community Colleges Chancellor's Office. Campus project team is working with environmental and geotechnical vendor to finalize studies related to hazardous materials and soils reports for the future Performing Arts Complex building site. Pfeiffer is working in conjunction with the Campus project team for addressing all mitigation measures related to the approved environmental impact reports (EIR). Among them are mitigation of noise, vibrations, and the historical character of the new facility in relation to the buildings located in the vicinity of the new structure.
- A request for proposal for a commissioning agent will be released to the District's pool for commissioning services. The target date for the RFP will be due on July 28th. The commissioning agent will be on board to assist in the design process as the project enters the working drawing phase of design.



**Future Home of the New Performing Arts Complex**

### **Update / Improve Infrastructure** **IT Network Refresh Project**

- The new phone system installation will be taking place in summer 2021
- Network Core installation is underway in the New Instructional Building. It is anticipated to be completed between the next 4-6 weeks. The installation will be side by side to avoid impact on the production side of the Network at the Campus.

# AERIAL VIEW — ANAHEIM CAMPUS PROJECTS



Secondary MDF Room  
[Close-Out]



Upper Deck Parking Lot  
Refurbishment  
[Pre –Planning]

Swing Space Projects / Interim  
Housing  
[Pre –Planning]

- ▶ Develop Interior and Exterior Signage [Pre—Planning]
- ▶ IT Network Refresh (Throughout Campus)  
[Implementation]



# PROJECT STATUS REPORT – ANAHEIM CAMPUS

## SECONDARY MDF ROOM

### CLOSE-OUT

<b>Address</b>	<b>1830 W. Romneya Dr. Anaheim, CA 92801</b>
<b>Project Manager</b>	<b>Cora Baldovino District</b>
<b>Architect</b>	<b>Rodriguez Engineering</b>
<b>General Contractor</b>	<b>Howard Ridley</b>
<b>Project Delivery</b>	<b>CUPCAA</b>
<b>Project Gross</b>	<b>&gt;1,000 GSF</b>



### Project Overview

The installation of a secondary Main Distribution Frame (MDF) room will be at the northeast corner of the existing Campus Utility Plant Building mezzanine level. This facility will support communications at the Campus in case of an outage at the current MDF room. Involves new structural steel framing to support the installation of new frame racks.

- Preliminary Total Project Budget ..... \$105,407
- Funding Source..... Measure J
  - Measure J ..... \$105,407
- Estimated Construction Start ..... November 2020
- Targeted Completion ..... March 2021

# PROJECT STATUS REPORT – ANAHEIM CAMPUS

## SWING SPACE PROJECTS / INTERIM HOUSING

### PRE-PLANNING

<b>Address</b>	<b>1830 W. Romneya Dr. Anaheim, CA 92801</b>
<b>Project Manager</b>	<b>Richard Williams District Director Facilities, Planning, and Construction</b>
<b>Architect</b>	<b>TBD</b>
<b>Project Delivery Method</b>	<b>TBD</b>



### Project Overview

As a result of the upcoming project to complete extensive repairs due to water intrusion at the Upper Deck Parking Lot, there is a need to temporarily relocate classrooms and facilities located on the 1st floor of the Anaheim-NOCE Campus before the start of construction activities. These new temporary modular buildings will allow for NOCE's instruction activities to continue during the repairs to the existing structure. Included are the design, assembly, construction, rent, and dismantling of 12 modular classrooms and associated facilities.

- Total Project Budget .....\$2,000,000
- Funding Source .....Measure J
- Project Gross Square Footage.....TBD
- Estimated Construction Start.....Winter/Spring 2022
- Targeted Construction Completion .....Summer 2022
- Temporary Structures Anticipated Dismantlement .....Fall 2024



# PROJECT STATUS REPORT – ANAHEIM CAMPUS

## DEVELOP INTERIOR AND EXTERIOR SIGNAGE

### PRE-PLANNING

<b>Address</b>	<b>1830 W. Romneya Dr.</b>
<b>Project Manager</b>	<b>Richard Williams District Director</b>
<b>Architect</b>	<b>Facilities, Planning, and Westberg + White</b>
<b>Project Delivery Method</b>	<b>TBD</b>



### Project Overview

Furnish and install new informational and wayfinding signage at indoor and outdoor spaces throughout the Anaheim Campus based on a uniform design standard under development by Westberg White Architecture.

- Total Project Budget .....\$313,800
- Funding Source .....Measure J
- Project Gross Square Footage.....N/A
- Estimated Construction Start.....Spring 2021
- Targeted Completion .....Fall 2021



# PROJECT STATUS REPORT – ANAHEIM CAMPUS

## UPPER DECK PARKING LOT REFURBISHMENT PRE-PLANNING

<b>Address</b>	<b>1830 W. Romneya Dr. Anaheim, CA 92801</b>
<b>Project Manager</b>	<b>Richard Williams District Director Facilities, Planning, and Construction</b>
<b>Architect</b>	<b>TBD</b>
<b>Project Delivery Method</b>	<b>TBD</b>



### Project Overview

Based on a recent study on water intrusion completed in late 2018 by R2A Architecture in collaboration with KPFF, Rodriguez Engineering, Inc. and Allana Buick & Bers, Inc. several extensive repairs are needed to mitigate and limit the points of water intrusion through the upper deck parking lot surrounding the Anaheim tower.

- Total Project Budget .....\$10,913,000
- Funding Source .....Measure J & State
  - Measure J .....\$2,183,000
  - State .....\$8,730,000
- Project Gross Square Footage.....61,952 ASF
- Estimated Construction Start.....Summer 2022
- Targeted Completion .....Spring 2024



# PROJECT STATUS REPORT – ANAHEIM CAMPUS

## UPDATE/IMPROVE INFRASTRUCTURE

### IMPLEMENTATION

<b>Address</b>	<b>1830 W. Romneya Dr. Anaheim, CA 92801</b>	<b>Total Project Budget</b>	<b>\$1,766,540 (Measure J)</b>
		<b>Total Budget Allocated</b>	<b>\$1,105,407 (Measure J)</b>
<b>Number of Projects</b>	<b>2</b>	<b>Funding Source</b>	<b>Measure J &amp; Capital Outlay</b>

### General Overview

Projects to address infrastructure improvements or upgrades throughout the Campus. Funds are allocated to projects as needs are identified.

### IT Network Refresh Project Overview

#### IMPLEMENTATION

Assessment of Campus data network infrastructure to identify necessary upgrades, and changes that will enable supporting future Campus needs; specifically addressing wired, wireless, voice, and video networks. Design of a new network will account for the District’s needs specific to logical infrastructure for the next 10 years. Physical infrastructure will also account for the District’s needs for the next 20 years. The scope includes replacing network core switches, providing a more responsive support structure, preparing for cloud computing, and adaptation of voice over IP systems across the District.

- Project Budget..... \$5,432,152
  - Current Implementation (Measure J) ..... \$754,209
  - Current Implementation (Capital Outlay)..... \$4,432,152
  - Upcoming Phases (Measure J) ..... \$245,791
- Funding Source ..... Measure J & Capital Outlay Funds
- Project Delivery Method ..... California Multiple Award Schedule (CMAS)
- Design Implementation..... VectorUSA
- Architect..... Shandam Consulting
- Project Management ..... District IS / PlanNet Consulting
- Design Implementation Start..... November 2019
- Targeted Completion ..... December 2021





# PROJECT STATUS REPORT – ANAHEIM CAMPUS

## UPDATES ON CAMPUS PROJECTS - ANAHEIM CAMPUS

### Secondary MDF Room

- Construction activities have successfully concluded for this project. The installation of equipment in progress is part of the IT Network Refresh project. This project has entered the close-out phase.

### Swing Space Projects / Interim Housing

- Planning is underway to allow for design, layout, and civil work for the existing playground removal and scoping for the tarmac expansion in preparation for the interim housing location. The first phase for that project will be done ahead of the interim housing modular temporary structure installation.

### Upper Deck Parking Lot Refurbishment

- The District is working closely with the California Community Colleges Chancellor's Office for the review and approval of the IPP/FPP process. A response on funding availability is anticipated before the end of the current fiscal year.

### Update / Improve Infrastructure

#### IT Network Refresh Project

- The scope of work for phase II of the design implementation is in the works. Change Order No. 2 for the project was presented to the Board of Trustees on February 9th, 2021. Network switches and Uninterruptible Power Supply (UPS) units are some of the items to be included in the upcoming phase of the project.



# COMPLETED PROJECTS

- CYPRESS COLLEGE
- FULLERTON COLLEGE
- NOCE – ANAHEIM CAMPUS & DISTRICT OFFICES



# COMPLETED PROJECTS

## Cypress College

Project Name	Funding Sources	Final Project Cost	Completion Date
Swing Space Projects - Gym II Improvements	Measure J	\$153,397	July 2018
Swing Space Projects - Parking Lot 5 Realignment	Measure J	\$1,956,399	September 2018
Mass Communication & Security Systems Upgrade: Safety Film	Measure J	\$145,772	January 2019
Mass Communication & Security System Upgrade: Door Replacement	Measure J	\$50,898	January 2019
Update / Improve Infrastructure: Central Plant Upgrades	Measure J	\$61,862	October 2020



Completed Parking Lot 5 Realignment from the Library & Learning Resource Center (LLRC) at Cypress College

# COMPLETED PROJECTS

## Fullerton College

Project Name	Funding Sources	Final Project Cost	Project Start Date	Completion Date
Update and Improve Infrastructure / Buildings 300-500 Sewer Line	Measure J and Scheduled Maintenance	\$444,702	May 2018	July 2020



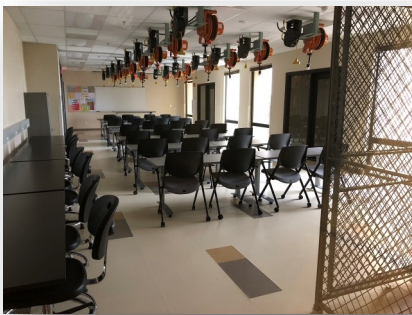
Completed Sewer Line Replacement to Buildings 300 and 500 at Fullerton College



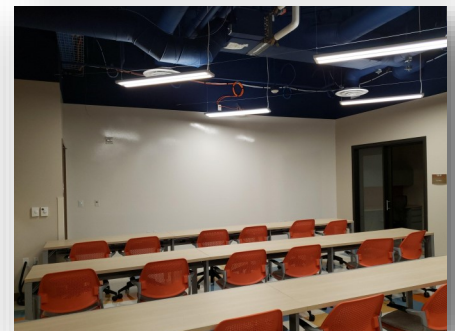
# COMPLETED PROJECTS

## NOCE—Anaheim Campus & District Offices

Project Name	Funding Sources	Final Project Cost	Completion Date
5th Floor CTE Laboratory and 2nd Floor Room 215	Measure J	\$640,736	September 2018
7th and 10th Floors Buildout	Measure X and Measure J	\$5,168,402	June 2019



Views of the Completed 5th Floor CTE Lab for North Orange Continuing Education at Anaheim Campus



Completed lobby and co-working spaces on the 7th and 10th Floors at Anaheim Campus



# FINANCIAL REVIEW

- Capital Projects Update
- Estimated Project Budgets
- 90-Day Look Ahead Schedule



# CAPITAL PROJECT UPDATES

**North Orange County Community College District  
Measure J  
Capital Projects Update  
As of April 30, 2021**

**Bond Authorization:**

Bond Authorization	574,000,000	100.00%
Bonds Sold - Series A + B	250,000,000	43.55%
<b>Available Principal Amount of Bonds</b>	<b>324,000,000</b>	<b>56.45%</b>

**Bond Funding Sources (Budget):**

		Actual Received	Remaining Balance
Bond Authorization	574,000,000	250,000,000	324,000,000
Estimated Net Interest Earnings	11,000,000	9,104,953	1,895,047
<b>Totals</b>	<b>585,000,000</b>	<b>259,104,953</b>	<b>325,895,047</b>

**Cost Status:**

Campus	Total Budget	%	Actual Expenses to Date	Remaining Balance
Anaheim Campus	23,607,800	4.04%	2,384,478	21,223,322
Cypress Campus	225,921,200	38.62%	102,476,993	123,444,207
Fullerton Campus	311,126,400	53.18%	49,341,607	261,784,793
District Expenses				
• Program Management	20,000,000	3.42%	5,144,706	14,855,294
• Bond Issuance Cost	3,544,600	0.61%	1,301,760	2,242,840
• Other Bond Expense	800,000	0.14%	356,839	443,161
<b>Totals</b>	<b>585,000,000</b>	<b>100.00%</b>	<b>161,006,383</b>	<b>423,993,617</b>



# ESTIMATED PROJECT BUDGETS

## CYPRESS CAMPUS CURRENT PROJECTS

### PROJECT BUDGET/VARIANCE REPORT—CYPRESS

CURRENT PROJECTS	Measure J Budget FEB FY 2020-21	Measure J Budget APR FY 2020-21	Variance	Measure J Expenses	Balance
New Science, Engineering, and Mathematics Building	\$ 94,322,272	1 \$ 94,068,202	\$ (254,070)	\$ 80,620,979	\$ 13,447,223
New Veterans' Resource Center & Student Activities Center Expansion	\$ 13,411,167	\$ 13,411,167	\$ -	\$ 11,443,394	\$ 1,967,773
Veterans' Memorial Bridge and Tribute Garden	\$ 100,800	\$ 100,800	\$ -	\$ -	\$ 100,800
Baseball Field Improvements	\$ 1,932,981	\$ 1,932,981	\$ -	\$ 1,584,572	\$ 348,409
Swing Space Projects	\$ 3,236,521	2 \$ 1,034,003	\$ (2,202,518)	\$ -	\$ 1,034,003
Swing Space Fine Arts (OLD SEM)	\$ 2,699,459	\$ 2,699,459	\$ -	\$ -	\$ 2,699,459
Swing Space Tech I/ Tech III (Old SEM)	\$ -	\$ -	\$ -	\$ -	\$ -
Swing Space Culinary Arts (Temp. Facility)	\$ -	\$ -	\$ -	\$ -	\$ -
Fine Arts Building Renovation	\$ 33,413,861	\$ 33,413,861	\$ -	\$ 283,804	\$ 33,130,057
Update/Improve Infrastructure	\$ 8,118,406	\$ 8,118,406	\$ -	\$ -	\$ 8,118,406
Update/Improve Infrastructure (New SEM)	\$ 2,801,641	1 \$ 3,055,711	\$ 254,070	\$ 2,814,321	\$ 241,390
Update/Improve Infrastructure (IT)	\$ 5,101,587	\$ 5,101,587	\$ -	\$ 1,520,769	\$ 3,580,818
Update/Improve Infrastructure (VRC/SAC)	\$ 1,144,756	\$ 1,144,756	\$ -	\$ 1,128,940	\$ 15,816
Update/Improve Infrastructure (IT - VRC/SAC)	\$ 252,530	\$ 252,530	\$ -	\$ -	\$ 252,530
Update/Improve Infrastructure (IT - New SEM)	\$ 645,883	\$ 645,883	\$ -	\$ 49,214	\$ 596,669
Update/Improve Infrastructure (Under Piazza & Stairwell Restoration)	\$ 3,300,000	\$ 3,300,000	\$ -	\$ -	\$ 3,300,000
Update/Improve Infrastructure (Piazza Above SAC)	\$ 3,000,000	\$ 3,000,000	\$ -	\$ -	\$ 3,000,000
Library-Learning Resource Center Expansion	\$ 5,038,665	\$ 5,038,665	\$ -	\$ 38,665	\$ 5,000,000
Central Plant Upgrade	\$ 7,000,000	\$ 7,000,000	\$ -	\$ -	\$ 7,000,000
Mass Communications & Security Systems Upgrade	\$ 1,942,855	\$ 1,942,855	\$ -	\$ -	\$ 1,942,855
Mass Communications & Security Systems Upgrade (New SEM)	\$ 389,367	\$ 389,367	\$ -	\$ 270,488	\$ 118,879
Mass Communications & Security Systems Upgrade (VRC/SAC)	\$ 60,938	\$ 60,938	\$ -	\$ 54,669	\$ 6,269
Campus-Wide Security Systems Upgrade	\$ 2,058,670	\$ 2,058,670	\$ -	\$ 58,670	\$ 2,000,000
Pool Restoration and Upgrade	\$ 3,909,470	\$ 3,909,470	\$ -	\$ -	\$ 3,909,470
Tech I/Tech III CTE Complex	\$ 31,260,839	\$ 31,260,839	\$ -	\$ -	\$ 31,260,839
Planning (Non Project Specific)	\$ 520,000	\$ 520,000	\$ -	\$ 150,807	\$ 369,193
Gym I/Gym II Restoration and Restrooms	\$ -	\$ -	\$ -	\$ -	\$ -
Under Piazza & Stairwell Restoration	\$ -	\$ -	\$ -	\$ -	\$ -
Gateway Phase 1	\$ -	\$ -	\$ -	\$ -	\$ -
Athletic Field Realignment/Entry Revisions/Parking Lot Improvements	\$ -	\$ -	\$ -	\$ -	\$ -
<b>COMPLETED PROJECTS</b>					
Swing Space - Gym II Renovation	\$ -	2 \$ 153,397	\$ 153,397	\$ 153,397	\$ -
Swing Space - Parking Lot 5 Expansion	\$ -	2 \$ 1,965,399	\$ 1,965,399	\$ 1,965,399	\$ -
Swing Space - Old SEM (Roofing)	\$ -	2 \$ 47,747	\$ 47,747	\$ 47,747	\$ -
Swing Space - Other	\$ -	2 \$ 35,975	\$ 35,975	\$ 35,975	\$ -
Update/Improve Infrastructure (Central Plant Enhancements)	\$ 61,862	\$ 61,862	\$ -	\$ 58,513	\$ 3,349
Mass Communications & Security Systems Upgrade (Safety Film)	\$ 145,772	\$ 145,772	\$ -	\$ 145,772	\$ -
Mass Communications & Security Systems Upgrade (Door Replacement)	\$ 50,898	\$ 50,898	\$ -	\$ 50,898	\$ -
<b>SUB TOTAL</b>	<b>\$ 225,921,200</b>	<b>\$ 225,921,200</b>	<b>\$ -</b>	<b>\$ 102,476,993</b>	<b>\$ 123,444,207</b>

#### NOTES:

- 2021-047 - CC - Project Encumbrance Transfer Request is required to re-align the budget - Update/ Improve Infrastructure (New SEM).
- 2021-046 - CC - Project Encumbrance Transfer Request is required to disseminate encumbrances/ expenditures attributed to the completion of projects - provided for clarity.





# ENCUMBRANCES OVER \$10,000

## CYPRESS CAMPUS - New Encumbrances (Feb. 2021 - Apr. 2021)

Project	Vendor	Purchase Order No.	Purchase Order Amount	Scope of Work
New SEM	VWR Funding, Inc.	P0143459	\$23,916.65	Purchase FF&E—Sterilizer, Undercounter Refrigeration
New SEM	Source Graphics	P0143485	\$34,671.59	Purchase FF&E—Printer, Resin Tank, Finishing Kit
New SEM	JH Technologies, Inc.	P0143505	\$32,381.68	Purchase FF&E—Stereomicroscope
New SEM	OPT	P0143568	\$60,423.00	FF&E—Laboratory Equipment
New SEM	American Crematory Equipment, Co.	P0143647	\$13,187.75	Provide Processing Station
New SEM	Farm Tek	P0143702	\$50,652.80	Purchase FF&E— Rolling Greenhouse
New SEM	Klinger Educational Products, Corp.	P0143882	\$92,319.92	Purchase FF&E—Leybold Torsion Balance
New SEM	Olympus America, Inc.	P0143885	\$304,818.05	Purchase FF&E—Biology Microscope Equipment
New SEM	VWR Funding, Inc.	P0143936	\$1,638,294.37	Provide FF&E—Scientific Equipment
New SEM	Anasazi Instruments, Inc.	P0144011	\$121,757.50	Provide FF&E—Spectrometer
New SEM	Pasco Scientific	P0144043	\$48,419.36	Purchase FF&E—Scientific Equipment
New SEM	United Testing Systems, Inc.	P0144046	\$31,027.28	Purchase FF&E—Indenter
New SEM	Pace Technologies Corporation	P0144090	\$14,271.50	Purchase FF&E—Dual wheel Grinder/Polisher
New SEM	Fisher Scientific Co., LLC	P0144124	\$130,931.53	Purchase FF&E—Scientific Equipment
New SEM	JH Technologies, Inc.	P0144125	\$19,696.60	Purchase FF&E—Stereomicroscope



# ENCUMBRANCES OVER \$10,000

## CYPRESS CAMPUS - New Encumbrances (Feb. 2021 - Apr. 2021)

Project	Vendor	Purchase Order No.	Purchase Order Amount	Scope of Work
New SEM	Tinius Olsen Testing Machine Company	P0144302	\$91,318.75	Purchase FF&E—Materials Testing Machine
New SEM	Platinum Visual Systems	P0144304	\$19,830.41	Provide Markerboards
New SEM	Carolina Biological Supply Co.	P014442	\$18,472.89	Purchase FF&E—Biology Equipment
New SEM	King Van & Storage Inc.	P0144490	\$87,904.00	Provide Professional Service—Move Management
New SEM	Klein Educational Systems, LLC.	P0144503	\$82,861.17	Provide LEVIL/FANUC CNC Milling Program
New SEM	Haworth Inc. c/o Unisource Solutions	P0144620	\$45,509.03	Haworth Task Chairs
VRC/SAC	CSI Fullmer	P0141682	\$199,588.38	Provide FF&E
Fine Arts	David Evans and Associates, Inc.	P0144626	\$16,200.00	Provide Professional Services—Land Survey



# ESTIMATED PROJECT BUDGETS

## FULLERTON CAMPUS

### CURRENT PROJECTS

### PROJECT BUDGET/VARIANCE REPORT—FULLERTON

CURRENT PROJECTS	Measure J Budget FEB FY 2020-21	Measure J Budget APR FY 2020-21	Variance	Measure J Expenses	Balance
Greenhouse Replacement	\$ 834,381	\$ 834,381	\$ -	\$ 615,026	\$ 219,355
New Instructional Building	\$ 53,588,031	\$ 53,588,031	\$ -	\$ 37,272,664	\$ 16,315,367
Central Plant Replacement & Expansion	\$ 10,600,000	\$ 10,600,000	\$ -	\$ 7,612,438	\$ 2,987,562
Renovate Buildings 300 & 500	\$ 20,482,000	\$ 20,482,000	\$ -	\$ 1,005,006	\$ 19,476,994
New M & O Building	\$ 6,758,944	\$ 6,758,944	\$ -	\$ 23,800	\$ 6,735,144
Chapman / Newell Instructional Building	\$ 21,985,777	\$ 21,985,777	\$ -	\$ 26,430	\$ 21,959,347
New Performing Arts Complex—Demolish Buildings 1100 and 1300	\$ 30,724,153	\$ 30,724,153	\$ -	\$ 61,633	\$ 30,662,520
New Welcome Center & Lot C West	\$ 37,353,872	\$ 37,353,872	\$ -	\$ -	\$ 37,353,872
New Horticulture/Lab School/STEM Lab	\$ 33,813,764	\$ 33,813,764	\$ -	\$ -	\$ 33,813,764
Renovate Building 840 Campus Services	\$ 7,878,400	\$ 7,878,400	\$ -	\$ -	\$ 7,878,400
Demolish Building 2000	\$ 1,108,000	\$ 1,108,000	\$ -	\$ -	\$ 1,108,000
New Parking Structure	\$ 11,219,260	\$ 11,219,260	\$ -	\$ -	\$ 11,219,260
Update/Improve Infrastructure	\$ 23,162,352	\$ 23,162,352	\$ -	\$ -	\$ 23,162,352
Update/Improve Infrastructure (IT)	\$ 7,721,018	\$ 7,721,018	\$ -	\$ 2,048,561	\$ 5,672,457
Update/Improve Infrastructure (IT - Instructional Bldg.)	\$ 278,982	\$ 278,982	\$ -	\$ -	\$ 278,982
New Thermal Energy Storage (TES)	\$ 10,139,524	\$ 10,139,524	\$ -	\$ -	\$ 10,139,524
Renovate Building 600	\$ 3,117,641	\$ 3,117,641	\$ -	\$ -	\$ 3,117,641
Renovate Health Center	\$ 1,328,800	\$ 1,328,800	\$ -	\$ -	\$ 1,328,800
Renovate Faculty Lounge & Offices	\$ 6,212,250	\$ 6,212,250	\$ -	\$ -	\$ 6,212,250
Renovate Wellness Center	\$ 2,534,400	\$ 2,534,400	\$ -	\$ -	\$ 2,534,400
Landscape & Hardscape Improvements	\$ 3,840,000	\$ 3,840,000	\$ -	\$ -	\$ 3,840,000
Renovate Building 3100	\$ 2,402,940	\$ 2,402,940	\$ -	\$ -	\$ 2,402,940
Demolish Building 1901-04, 1956-60, 3000	\$ 1,333,000	\$ 1,333,000	\$ -	\$ -	\$ 1,333,000
Parking Lot Improvements at Building 3000	\$ 1,999,500	\$ 1,999,500	\$ -	\$ -	\$ 1,999,500
Renovate Building 2100	\$ 8,277,500	\$ 8,277,500	\$ -	\$ -	\$ 8,277,500
Demolish Buildings 2200 & 3104	\$ 1,392,209	\$ 1,392,209	\$ -	\$ -	\$ 1,392,209
Planning (Non Project Specific)	\$ 595,000	\$ 595,000	\$ -	\$ 231,347	\$ 363,653
<b>COMPLETED PROJECTS</b>					
Update/Improve Infrastructure (Bldg 300-500 Sewer Line)	\$ 444,702	\$ 444,702	\$ -	\$ 444,702	\$ -
<b>SUB TOTAL</b>	<b>\$ 311,126,400</b>	<b>\$ 311,126,400</b>	<b>\$ -</b>	<b>\$ 49,341,607</b>	<b>\$ 261,784,793</b>

NOTES:



# ENCUMBRANCES OVER \$10,000

## FULLERTON CAMPUS - New Encumbrances (Feb. 2021 - Apr. 2021)

Project	Vendor	Purchase Order No.	Purchase Order Amount	Scope of Work
New Performing Arts Complex	P2S Engineering, Inc.	P0143793	\$14,500.00	Feasibility Study to Relocate Electrical/Telecom
New Performing Arts Complex	Infotox, Inc.	P0144446	\$70,730.00	Asbestos & Lead Survey
New Instructional Building	GST	P0142867	\$948,455.06	Audio Visual Integration
New Instructional Building	Sasco Electric	P0143288	\$17,360.00	Cabling
New Instructional Building	Krueger International, Inc.	P0143569	\$153,518.97	Lock Number Changes. Provide Audio Visual Furniture
New Instructional Building	KT industries, Inc.	P0143870	\$21,861.25	Provide Reconditioned GE Power VAC
New Instructional Building	King Van & Storage, Inc.	P0144623	\$76,175.00	Provide Professional Services—Move Management
Chapman / Newell	Devaney	P0143391	\$10,000	Provide Professional Legal Services
New M&O Building	Devaney	P0143391	\$10,000	Provide Professional Legal Services



# ESTIMATED PROJECT BUDGETS

## ANAHEIM CAMPUS

### CURRENT PROJECTS

### PROJECT BUDGET/VARIANCE REPORT—ANAHEIM

CURRENT PROJECTS	Measure J Budget FEB FY 2020-21	Measure J Budget APR FY 2020-21	Variance	Measure J Expenses	Balance
Update/Improve Infrastructure	\$ 661,133	\$ 661,133	\$ -	\$ -	\$ 661,133
Update/Improve Infrastructure (IT)	\$ 1,000,000	\$ 1,000,000	\$ -	\$ 684,498	\$ 315,502
Update/Improve Infrastructure (Secondary MDF)	\$ 105,407	\$ 105,407	\$ -	\$ 91,294	\$ 14,113
Develop Interior and Exterior Signage	\$ 313,800	\$ 313,800	\$ -	\$ -	\$ 313,800
Second Floor Tenant Improvements	\$ 813,000	\$ 813,000	\$ -	\$ -	\$ 813,000
Swing Space Projects/ Interim Housing	\$ 2,000,000	\$ 2,000,000	\$ -	\$ -	\$ 2,000,000
Upper Parking Lot Remodel	\$ 2,183,000	\$ 2,183,000	\$ -	\$ 42,503	\$ 2,140,497
Upper Deck Enhancements	\$ 309,901	\$ 309,901	\$ -	\$ -	\$ 309,901
1st. Floor Remodel Student Center and Classrooms	\$ 2,352,720	\$ 2,352,720	\$ -	\$ -	\$ 2,352,720
Pedestrian and Vehicular Traffic Flow	\$ 2,329,000	\$ 2,329,000	\$ -	\$ -	\$ 2,329,000
4th Floor Improvements	\$ 218,000	\$ 218,000	\$ -	\$ -	\$ 218,000
Outdoor Patio Remodel	\$ 1,382,500	\$ 1,382,500	\$ -	\$ -	\$ 1,382,500
Develop Drop-Off Plaza at Romneya Drive	\$ 569,000	\$ 569,000	\$ -	\$ -	\$ 569,000
Develop Intersection at Romneya & Coronet	\$ 773,631	\$ 773,631	\$ -	\$ -	\$ 773,631
Holding Account	\$ 6,600,000	\$ 6,600,000	\$ -	\$ -	\$ 6,600,000
Planning (Non Project Specific)	\$ 440,000	\$ 440,000	\$ -	\$ 9,475	\$ 430,525
<b>COMPLETED PROJECTS</b>					
7th and 10th Floors Buildout	\$ 915,972	\$ 915,972	\$ -	\$ 915,972	\$ -
5th Floor CTE & 2nd Floor Room 215	\$ 640,736	\$ 640,736	\$ -	\$ 640,736	\$ -
<b>SUB TOTAL</b>	<b>\$ 23,607,800</b>	<b>\$ 23,607,800</b>	<b>\$ -</b>	<b>\$ 2,384,478</b>	<b>\$ 21,223,322</b>

NOTES:



# ENCUMBRANCES OVER \$10,000

## ANAHEIM CAMPUS - New Encumbrances (Feb. 2021 - Apr. 2021)

No Purchase Orders over \$10,000 have been issued for Anaheim-NOCE Campus as of April 31, 2021



# ESTIMATED PROJECT BUDGETS

## DISTRICT

### PROJECT BUDGET/VARIANCE REPORT—DISTRICT

DISRICT WIDE EXPENSE	Measure J Budget FEB FY 2020-2021	Measure J Budget APR FY 2020-21	Variance	Measure J Expenses	Balance
Program Management Fees	\$ 20,000,000	\$ 20,000,000	\$ -	\$ 5,144,706	\$ 14,855,294
Bond Issuance Cost	\$ 3,544,600	\$ 3,544,600	\$ -	\$ 1,301,760	\$ 2,242,840
Other	\$ 800,000	\$ 800,000	\$ -	\$ 356,839	\$ 443,161
<b>SUB TOTAL</b>	<b>\$ 24,344,600</b>	<b>\$ 24,344,600</b>	<b>\$ -</b>	<b>\$ 6,803,305</b>	<b>\$ 17,541,295</b>



# ENCUMBRANCES OVER \$10,000

## DISTRICT - New Encumbrances (Feb. 2021 - Apr. 2021)

No Purchase Orders over \$10,000 have been issued for the District as of April 31, 2021





# ACTIVE PROJECTS

## 90 - DAY LOOK AHEAD



NORTH ORANGE COUNTY COMMUNITY COLLEGE DISTRICT

CYPRESS - FULLERTON - ANAHEIM (NOCE)

### 90-DAY LOOK AHEAD SCHEDULE

(05-01-21 TO 07-30-21)



	May			June				July				Comments		
	4	11	18	25	1	8	15	22	29	6	13		20	27
<b>GENERAL</b>														
NOCCCD Board Meetings														
COC Meetings														June 2nd, 2021 (Meetings held via Zoom)
Bond Program Management Team Mtgs.														April 20th, May 18th, June 15th (Meetings held via Zoom)
<b>PLANNING</b>														
<b>ANAHEIM (NOCE)</b>														
Upper Deck Parking Lot Refurbishment														Final Project Proposal (FPP) Under Review at CCCC
Develop Interior and Exterior Signage														* Working on design standard
<b>CYPRESS</b>														
Swing Space Projects														In Progress
SAC Piazza, Under Piazza, Student Engagement Hub, LLRC Expansion														In Progress
<b>FULLERTON</b>														
New M&O Building														In Progress
Chapman/Newell Instructional Building														In Progress
<b>DESIGN PHASE</b>														
<b>CYPRESS</b>														
Fine Arts Building Renovation														
Working Drawings														In Progress
Campus wide security systems upgrades														In Progress
<b>FULLERTON</b>														
New Performing Arts Complex														
CCCO Review of Preliminary Plans														In Progress
<b>DSA PHASE &amp; AGENCY REVIEW</b>														
No Entries for this reporting period														
<b>BIDDING</b>														
<b>FULLERTON</b>														
Renovate 300-500 Buildings														
Preparations for Project Re-Bidding in Q2-2021														In Progress
<b>PRE-CONSTRUCTION PHASE</b>														
<b>CYPRESS</b>														
Mass Communications - Security Cameras														Development of Scopes of Work
<b>CONSTRUCTION PHASE</b>														
<b>CYPRESS</b>														
Network Refresh														
Phase II Design Implementation														Planning In Progress
New SEM & Assoc. Mass Comm and Infra. Construction														
IDC Interior Framing and Finishes														Completed
Elevator mechanical room framing and rail component installation														Completed
Voice, data, and fire alarm cabling														Completed
Hardscaping around building site														Completed
VRC Sundt Punch Walk and Final Finishes Repairs														In Progress
SAC Sundt Punch Walk and Final Finishes Repairs														In Progress
Mass Comm. & security system upgrade (New SEM)														In Progress
Mass Comm. & security system upgrade (VRC/SAC)														Completed
<b>New VRC/SAC</b>														
VRC Sundt Punch Walk and Final Finishes Repairs														Completed
SAC Sundt Punch Walk and Final Finishes Repairs														Completed
Building Users Move-in														Completed
Athletic Field Realignment - Baseball Clubhouse Punch-List														Completed



# ACTIVE PROJECTS

## 90 - DAY LOOK AHEAD (Continued)



NORTH ORANGE COUNTY COMMUNITY COLLEGE DISTRICT  
**CYPRESS - FULLERTON - ANAHEIM (NOCE)**  
**90-DAY LOOK AHEAD SCHEDULE**  
 (05-01-21 TO 07-30-21)



	May				June				July				Comments	
	4	11	18	25	1	8	15	22	29	6	13	20		27
<b>CONSTRUCTION PHASE</b>														
<b>FULLERTON</b>														
horticulture Lab - Greenhouse Replacement														
Punch Walk and Final Repairs	■	■	■											In Progress
ew Instructional Building														
Exterior Wall Sheathing, Waterproofing and Window Installation	■	■	■	■	■	■	■	■						In Progress
Mechanical, Electrical, and Plumbing Rough-In	■	■	■	■	■	■	■	■						In Progress
Interior Framing	■	■	■	■	■	■	■	■						Completed
Building Roofing	■	■	■	■	■	■	■	■						In Progress
Interior Drywall	■	■	■	■	■	■	■	■						Completed
Interior Painting, Tiling, T-Bar Installation and Carpeting	■	■	■	■	■	■	■	■						In Progress
entral Plant Expansion														
Installation of Underground Utilities														Completed
Connection to Existing Utilities														Completed
Mechanical, Electrical, and Plumbing Rough-In	■	■	■	■										In Progress
Site Work and Hardscaping														Completed
etwork Refresh														
Phase II Design Implementation														Planning In Progress
Coordination for Greenhouse Components	■	■	■											In Progress
<b>ANAHEIM (NOCE)</b>														
nd Main Distribution Frame (MDF) Room - Equipment	■	■	■											Nearing Completion
<b>LOSE-OUT PHASE</b>														
<b>ANAHEIM (NOCE)</b>														
nd Main Distribution Frame (MDF) Room for Campus		■	■	■	■	■	■							In Progress
<b>CYPRESS</b>														
lupdate Infrastructure - Central Plant Enhancements	■	■	■	■	■	■	■	■						In Progress
hletic Field Realignment - Baseball Clubhouse	■	■	■	■	■	■	■	■						In Progress
RC/SAC	■	■	■	■	■	■	■	■						In Progress
eterans' Memorial Bridge and Tribute Garden and Pond Refurb.	■	■	■	■	■	■	■	■						In Progress
ond Refurbishment	■	■	■	■	■	■	■	■						In Progress
aseball Field Improvements	■	■	■	■	■	■	■	■						In Progress
<b>FULLERTON</b>														
entral Plant Expansion	■	■	■	■	■	■	■	■	■	■	■	■	■	In Progress
orticulture Lab - Greenhouse Replacement		■	■	■	■	■	■	■						In Progress



**June 2021**

# **Citizens' Oversight Committee**

**COCC**

## **Measure J Bond Program**



1830 W. Romneya Dr., Building B., Anaheim, CA 92801